

MATERIAL
RUBBER

POWER PARTS COMPANY

1860 NORTH WILMOT AVENUE
 CHICAGO, ILLINOIS 60647

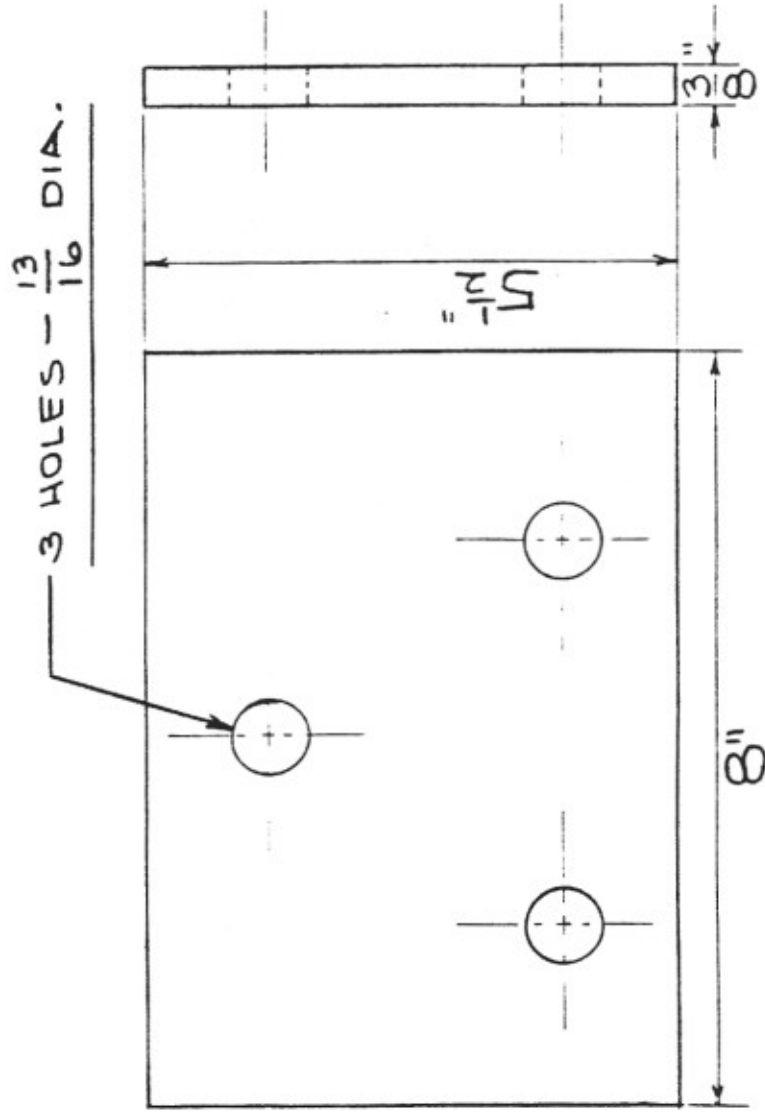
Distributor for

UNIROYAL

PAD-BOLSTER STOP

O.E.M.# BUDD 99-20808

ORDERING REFERENCE P.P.C. 6946



POWER PARTS COMPANY

1860 NORTH WILMOT AVENUE

CHICAGO, ILLINOIS 60647

Distributor for

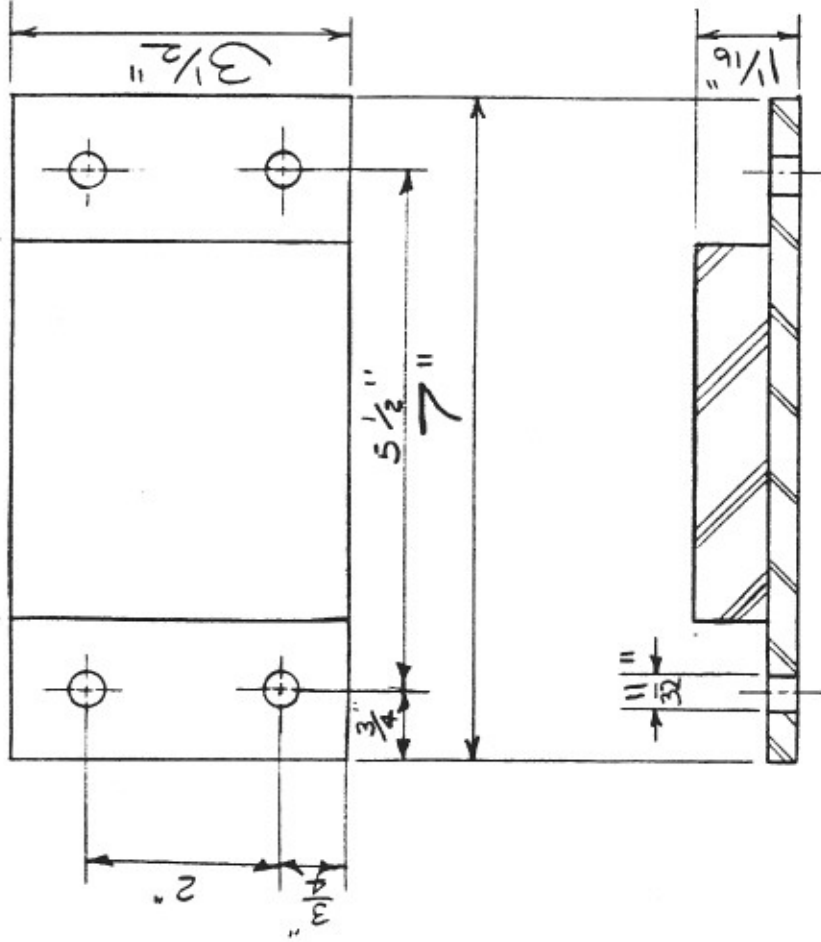
UNIROYAL

MATERIAL
UNIROYAL 15175

RAD-BOLSTER WEAR PLATE

O.E.M.# BUDD 99-33111

ORDERING REFERENCE P.P.C.4210



MATERIAL
STEEL & RUBBER

POWER PARTS COMPANY

1860 NORTH WILMOT AVENUE
 CHICAGO, ILLINOIS 60647

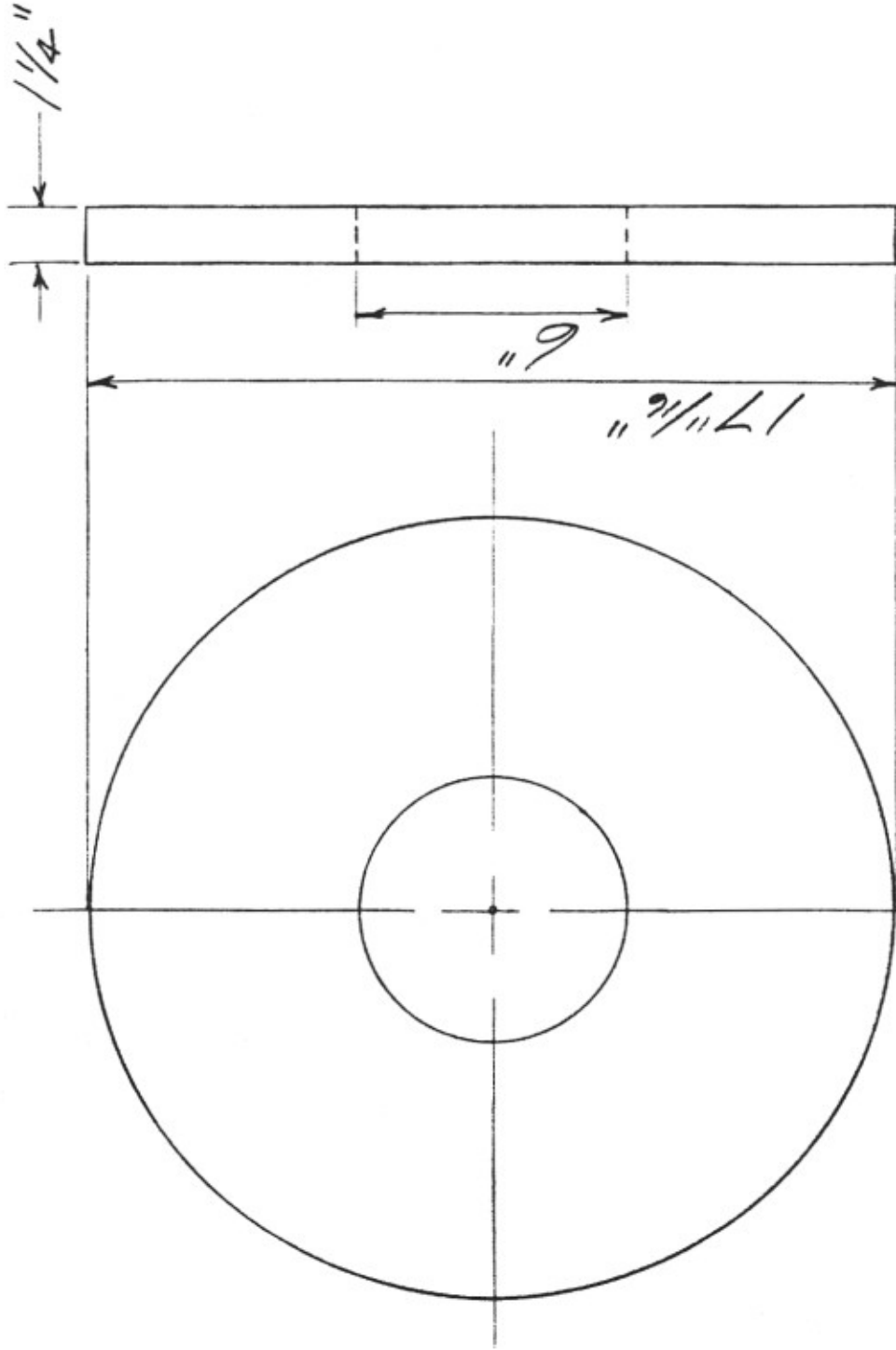
Distributor for

UNIROYAL

PAD - BOLSTER END

O.E.M.# BUDD F99-34131

ORDERING REFERENCE P.P.C. 8220



MATERIAL

LAMINATED PHENOLIC

POWER PARTS COMPANY

1860 NORTH WILMOT AVENUE

CHICAGO, ILLINOIS 60647

Distributor for

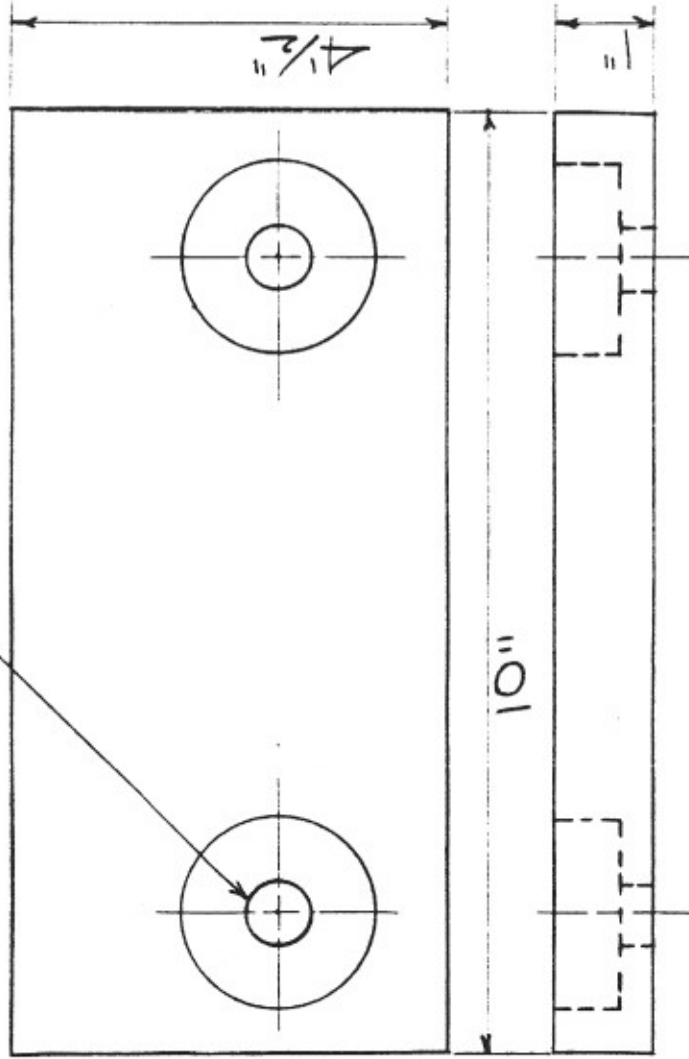
UNIROYAL

PAD - CENTER PLATE

O.E.M.# BUDD E99 - 50B36

ORDERING REFERENCE P.P.C. 0326

2 HOLES - $\frac{11}{16}$ DIA



POWER PARTS COMPANY

1860 NORTH WILMOT AVENUE
CHICAGO, ILLINOIS 60647

Distributor for

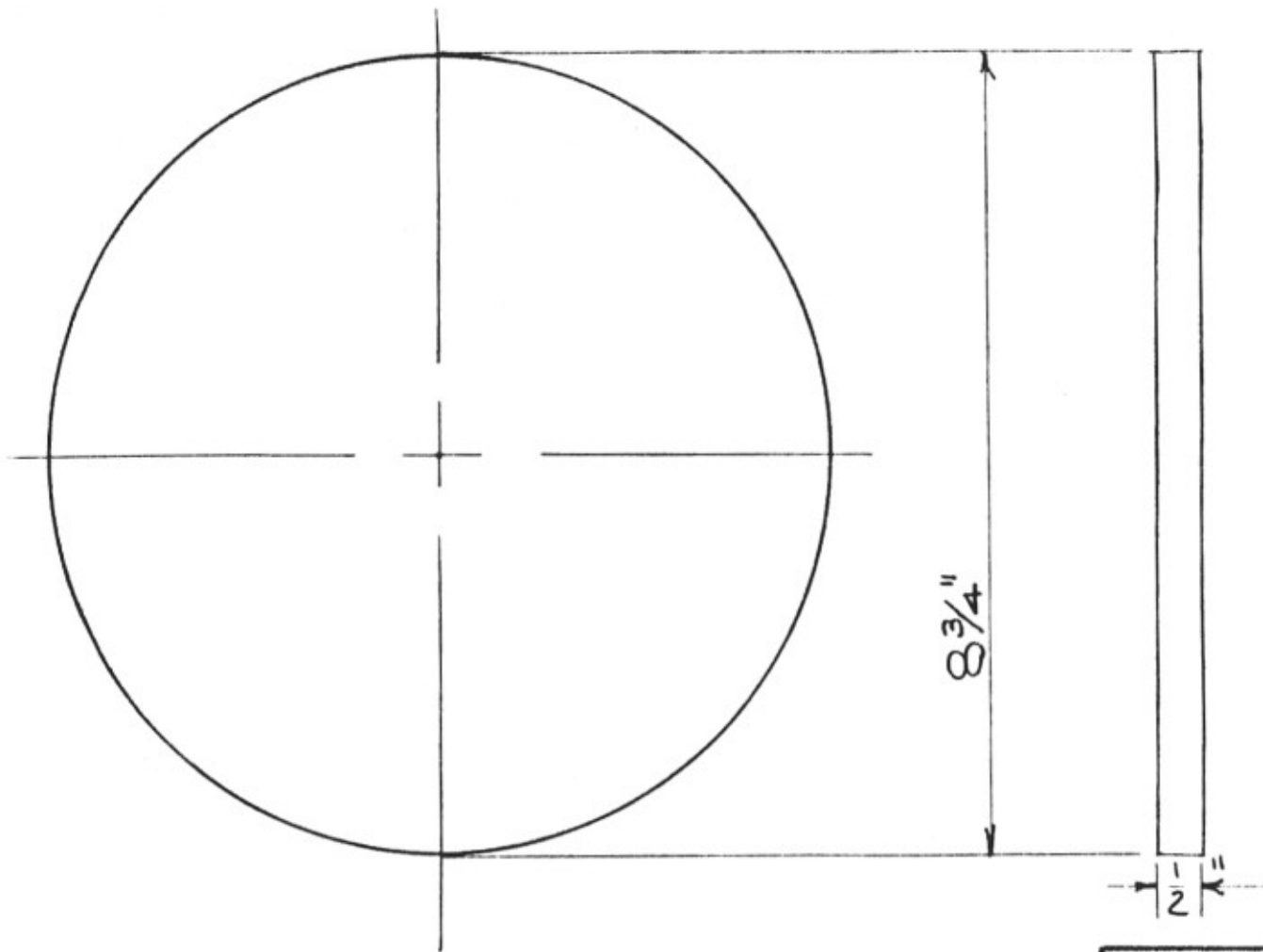
UNIROYAL

PAD

O.E.M.# BUDO F-99-51512

ORDERING REFERENCE P.P.C. 8373

MATERIAL
UNIROYAL 15175



MATERIAL
UNIROYAL 15175

USED ON	
— CARS —	
300-302	REAR TRUCK
304-305	" "
300-302	ARTICULATED-
304-305	FRONT TRUCK
306-307	ART. FRONT REAR TR.
400-405	ART. REAR TRUCK
400-405	FRONT TRUCK
450-455	" "
— COACH —	
323	FRONT REAR TR.

REFERENCE —
N. PACIFIC DWG. 310-305

SHEET 2

POWER PARTS COMPANY

1860 NORTH WILMOT AVENUE
CHICAGO, ILLINOIS 60647

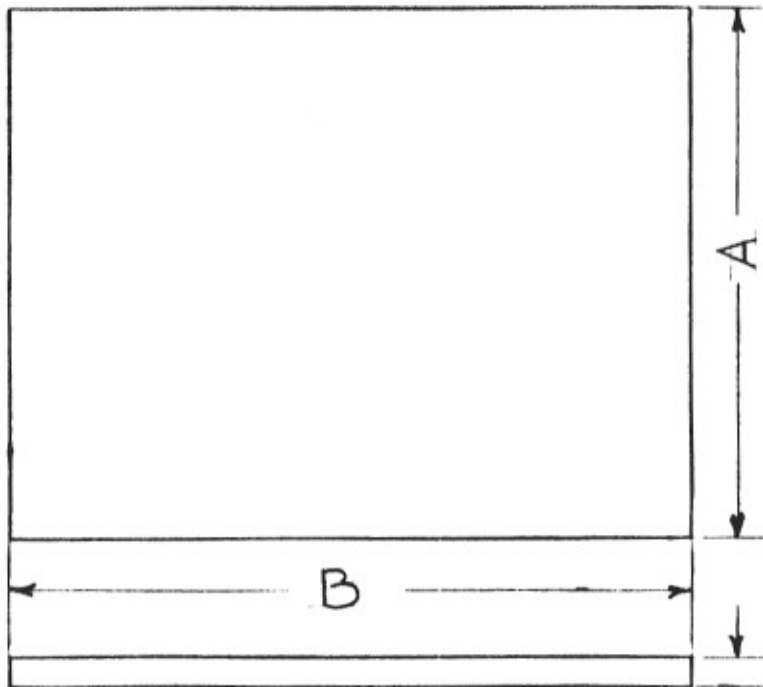
Distributor for

UNIROYAL

PAD-COIL SPRING SEAT

O.E.M. # BUDD L-99-51935

ORDERING REFERENCE P.P.C. 1030



"A"	"B"	THICKNESS	O.E.M. #	P.P.C. #
5 ⁵ / ₃₂ "	7 ⁷ / ₃₂ "	1/2"	BUDDL-99-51955	1031
4 ¹ / ₄ "	14"	1/4"	BUDDL-99-51957	1032
5 ¹ / ₂ "	5 ⁷ / ₈ "	1/4"	HYATT 2-E-2309-36	8353
5"	5 ⁷ / ₈ "	11/32"	HYATT 2-E-3209-24	8661
5 ⁷ / ₈ "	8"	9/32"	HYATT 2-E-3209-25	5074
5 ⁷ / ₈ "	6 ³ / ₈ "	9/32"	HYATT 2-E-3209-29	8057
7 ¹ / ₈ "	8 ⁵ / ₈ "	1/2"	TIMKEN K-21083	2094
7 ¹ / ₄ "	8 ⁵ / ₈ "	15/64"	TIMKEN K-28030	4219
7 ¹ / ₄ "	8 ⁵ / ₈ "	1/4"	TIMKEN K-77730	4218
7 ¹ / ₄ "	8 ⁵ / ₈ "	1/2"	TIMKEN K-56309	8659
7 ¹ / ₄ "	8 ⁵ / ₈ "	1/2"	TIMKEN A-16333-A	8659
7 ¹ / ₄ "	8 ⁵ / ₈ "	1/2"	HYATT 2E-3209-22	8659
7 ¹ / ₈ "	8 ⁵ / ₈ "	1/2"	BUDDL T-99-50270	2094
8"	8 ¹ / ₄ "	11/32"	HYATT 2-E-3209-1	8639
8"	8 ⁵ / ₁₆ "	11/32"	HYATT 2-E-3209-21	8341

MATERIAL-
UNIROYAL 15175

POWER PARTS COMPANY

1860 NORTH WILMOT AVENUE
CHICAGO, ILLINOIS 60647

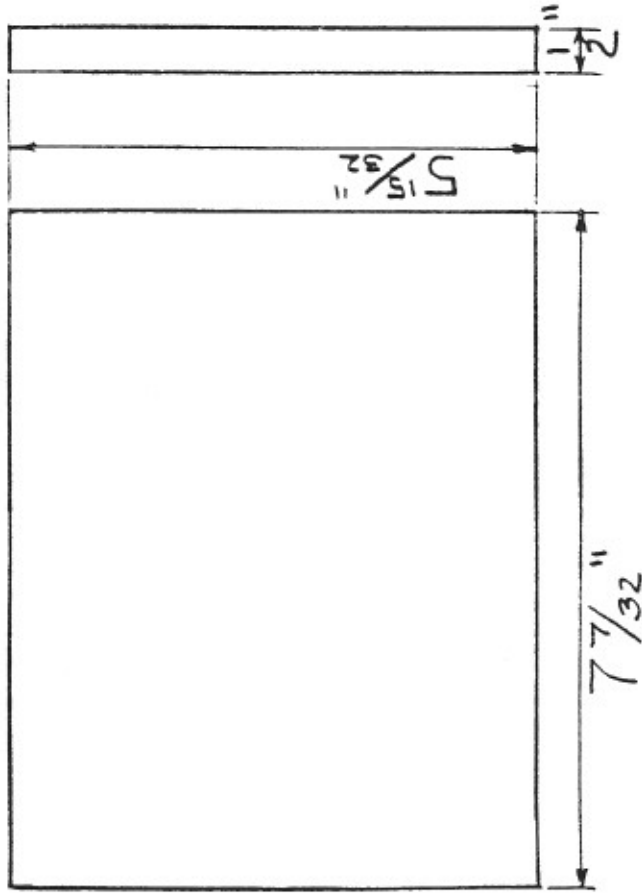
Distributor for



— PAD —

O.E.M.# (SEE TABLE)

ORDERING REF. P.P.C.# (SEE TABLE)



MATERIAL
UNIROYAL 15175

POWER PARTS COMPANY

1860 NORTH WILMOT AVENUE
CHICAGO, ILLINOIS 60647

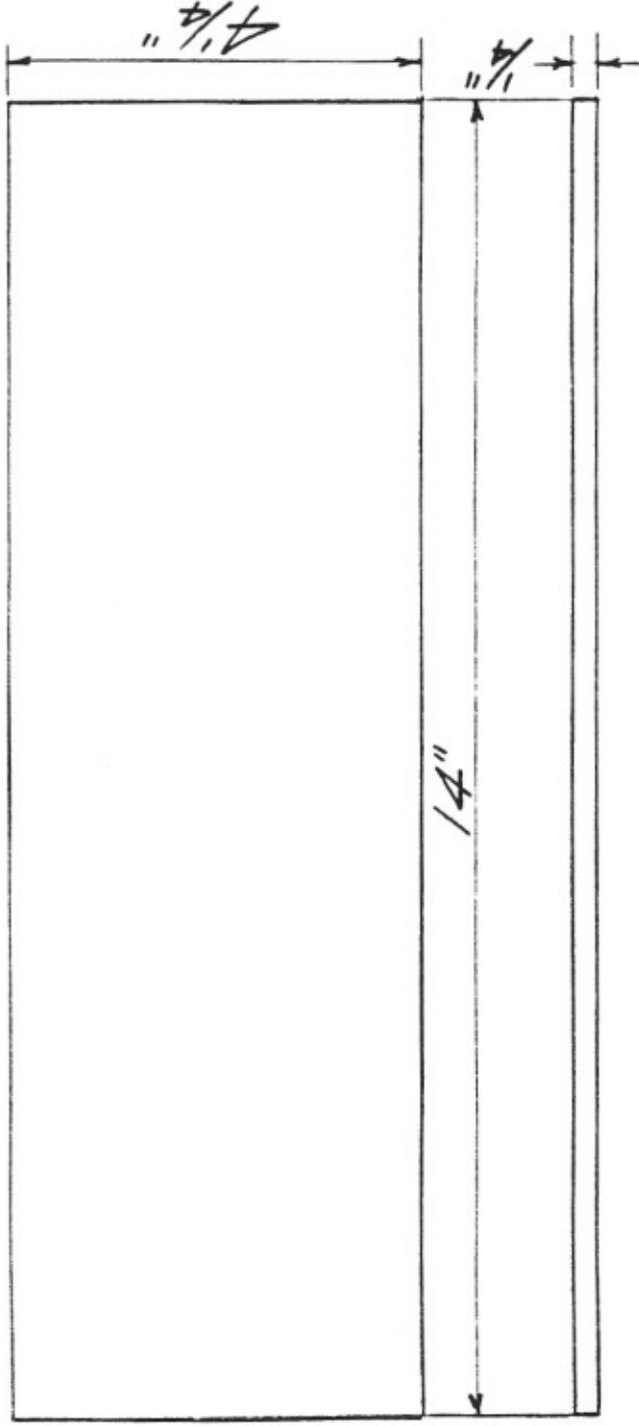
Distributor for

UNIROYAL

RAD-EQUALIZER SEAT

O.E.M.# BUDD L-99-51955

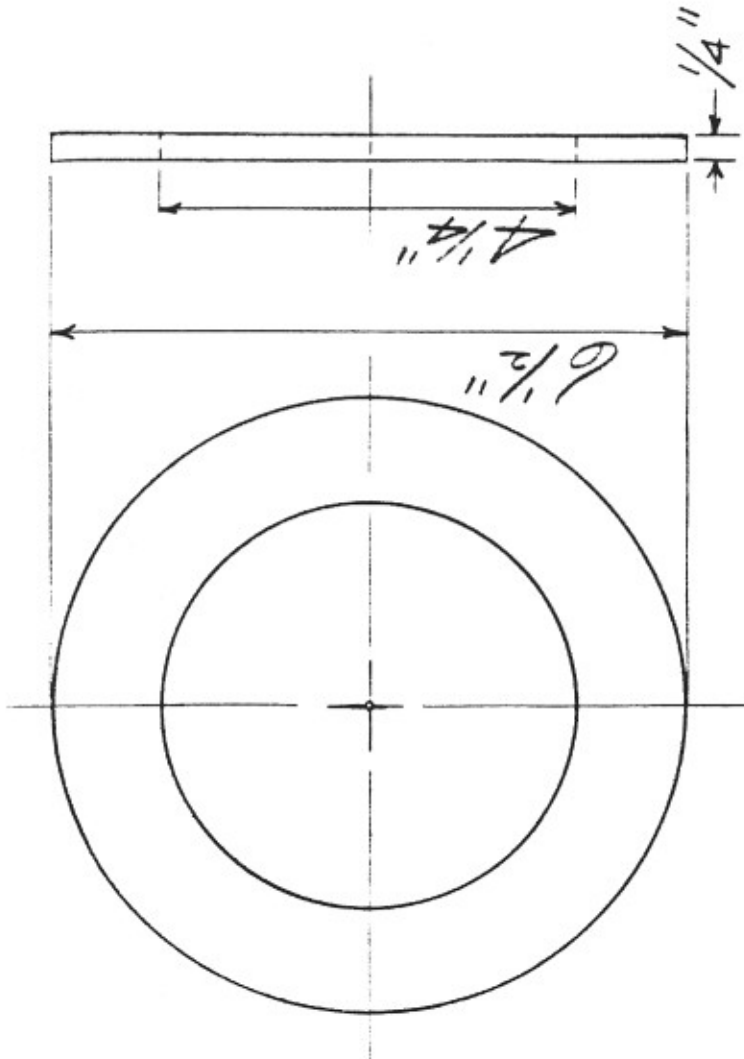
ORDERING REFERENCE P.P.C. 1031



REFERENCE —
 THE B&O R.R. DWG. 584762

MATERIAL
 UNIROYAL 15175

Distribution for UNIROYAL
POWER PARTS COMPANY 1860 NORTH WILMOT AVENUE CHICAGO, ILLINOIS 60647
PAD-SWING HANGER BEARING
O.E.M.# BUDD L-99-51957
ORDERING REFERENCE P.P.C. 1032



POWER PARTS COMPANY

1860 NORTH WILMOT AVENUE
CHICAGO, ILLINOIS 60647

Distributor for

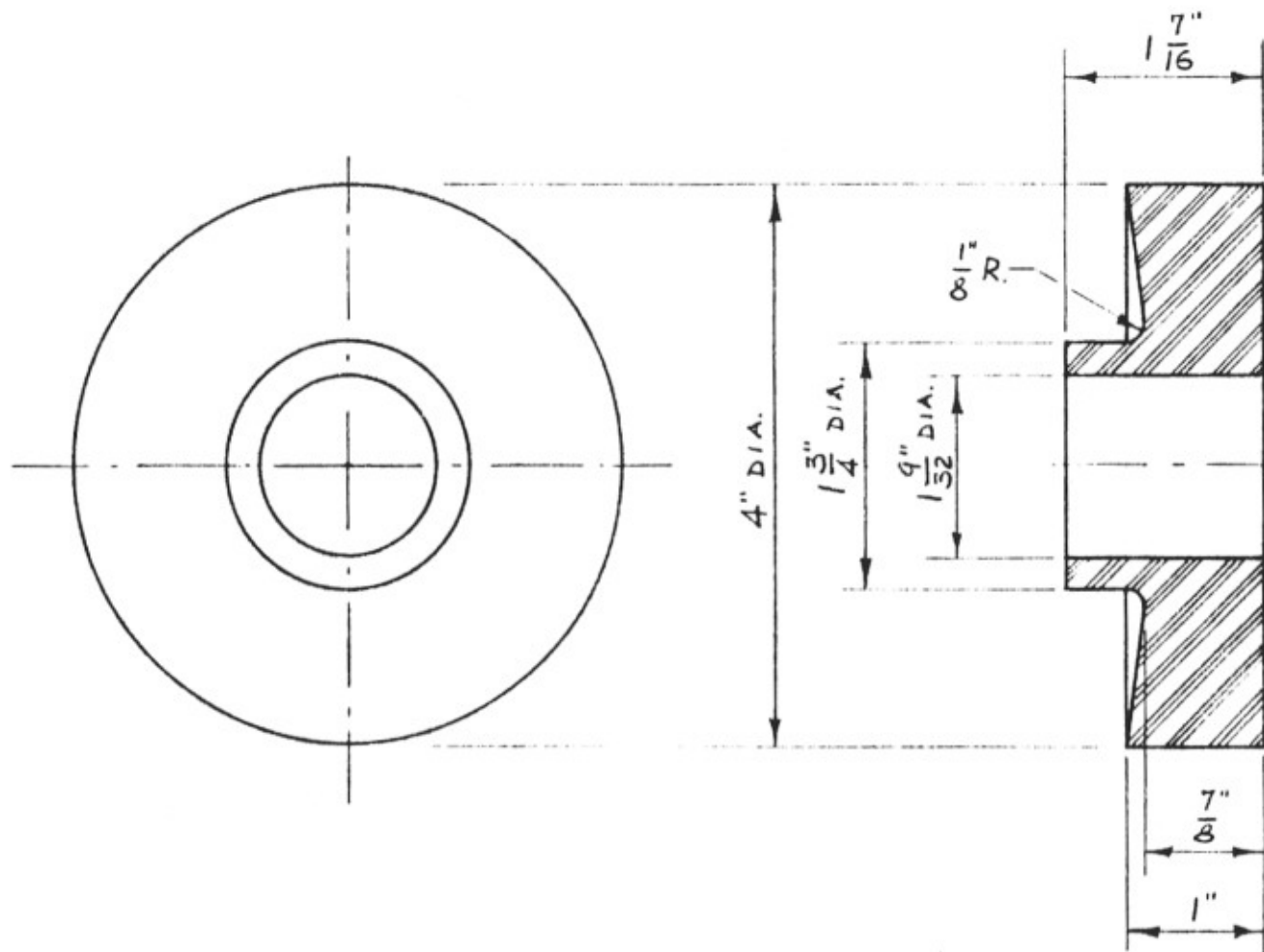
UNIROYAL

PAD-CENTER PIN

O.E.M.# BUDD F-99-57668

ORDERING REFERENCE PPC 9330

MATERIAL
UNIROYAL 15175



MATERIAL: RUBBER

POWER PARTS COMPANY

1860 NORTH WILMOT AVENUE
CHICAGO, ILLINOIS 60647

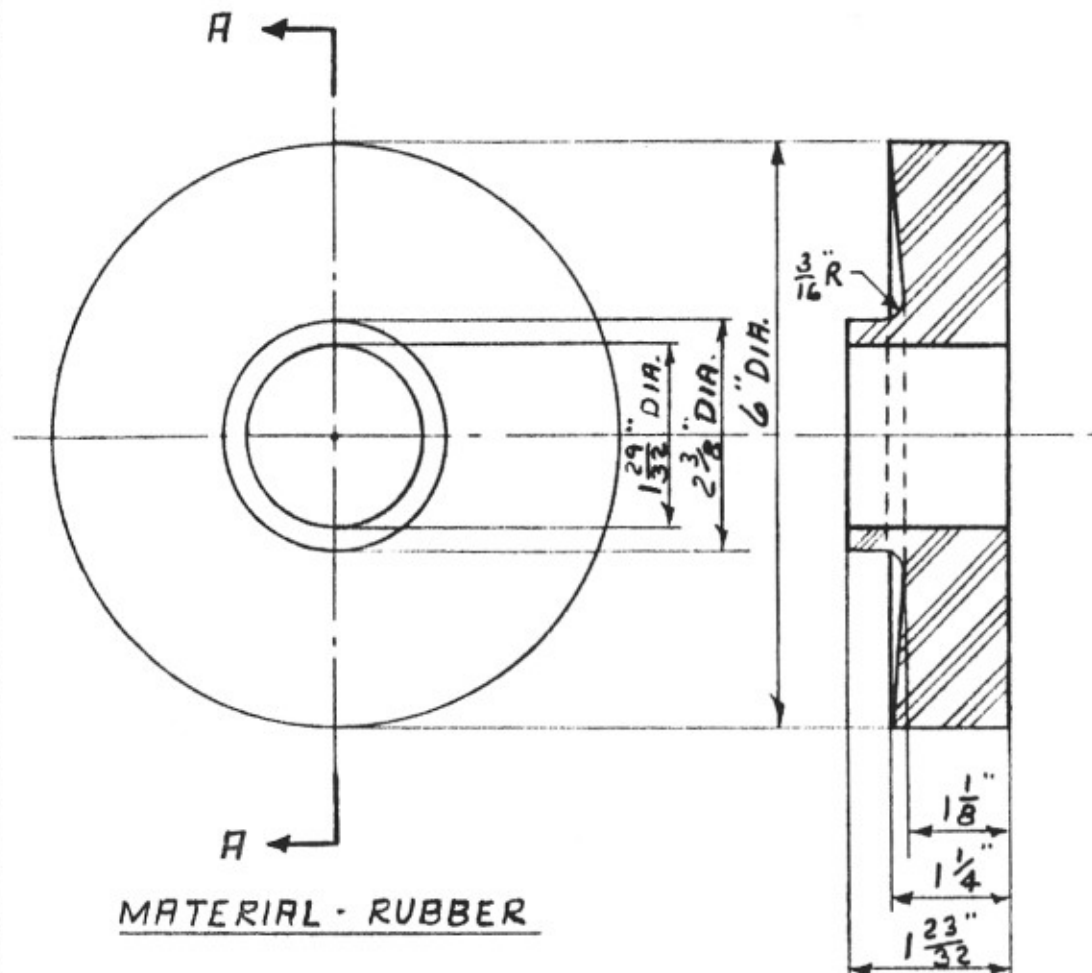
Distributor for

UNIROYAL

PAD - BOLSTER ANCHOR

OEM NO. GSI 25104-9

ORDERING REFERENCE



MATERIAL - RUBBER

SECTION A-A

REFERENCE -

NORTHERN PACIFIC RAILWAY CO. DWG 53420

NOTE:

FOUR PADS REQ'D PER ANCHOR.

SERIES	WHERE USED	LINE
400-401, 403-404, 406-411	WATER-BAGGAGE CARS	1
527-532	COACHES	2
MADISON R.	BUSINESS CAR	3
364-365	SLEEPERS	4
452, 455	DINING CARS	5
492-493	PARLOR-BAR-LOUNGE CARS	6
549-556	DOME COACHES	7
581-587	DELUXE COACHES	8
307-314	DOME SLEEPERS	9
367-372	SLEEPERS	10
YELLOWSTONE RIVER - CLARK FORK RIVER - YAKIMA RIVER	BUSINESS CARS	11
200-207, 212-217, 219-221, 223-239	BAGGAGE CARS	12
459-463	DINING CARS	13
578-580	DAY-NITE COACHES	14
430	MAIL-DORMITORY CAR	15
450, 451, 453, 454, 456, 457	ECONOMY BUFFET CARS	16
325-334	SLUMBER COACHES	17
250-259	BAGGAGE CARS	18

POWER PARTS COMPANY

1860 NORTH WILMOT AVENUE
CHICAGO, ILLINOIS 60647

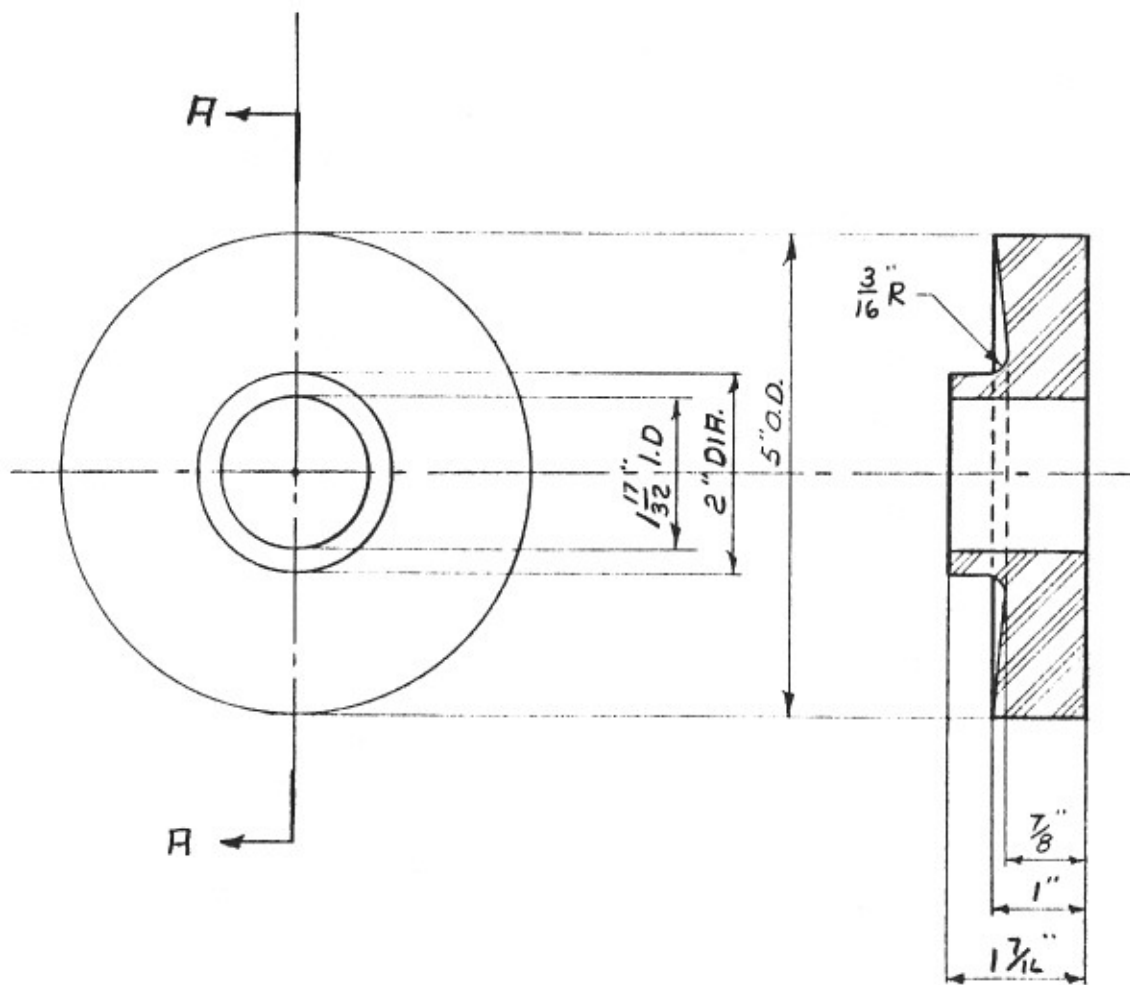
Distributor for

UNIROYAL

PAD - BOLSTER ANCHOR

OEM. # GSI - 25104 - 11

ORDERING REFERENCE - PPC - DS279



MATERIAL - RUBBER

SECTION A-A

SERIES	WHERE USED	LINE
425-427,429	MAIL DORMITORY CARS	1
494-498	TRAVELERS REST CARS	2
500-517	DELUXE COACHES	3
588-597	DELUXE COACHES	4
350-352 355-363	SLEEPERS	5
390-394	SLEEPER-OBSERVATION CARS	6
518-526	COACHES (ORIG. C&NW COACHES)	7

REFERENCE -

NORTHERN PACIFIC RAILWAY CO. DWG 51673

NOTE -

FOUR PADS REQ'D PER ANCHOR

POWER PARTS COMPANY

1860 NORTH WILMOT AVENUE
CHICAGO, ILLINOIS 60647

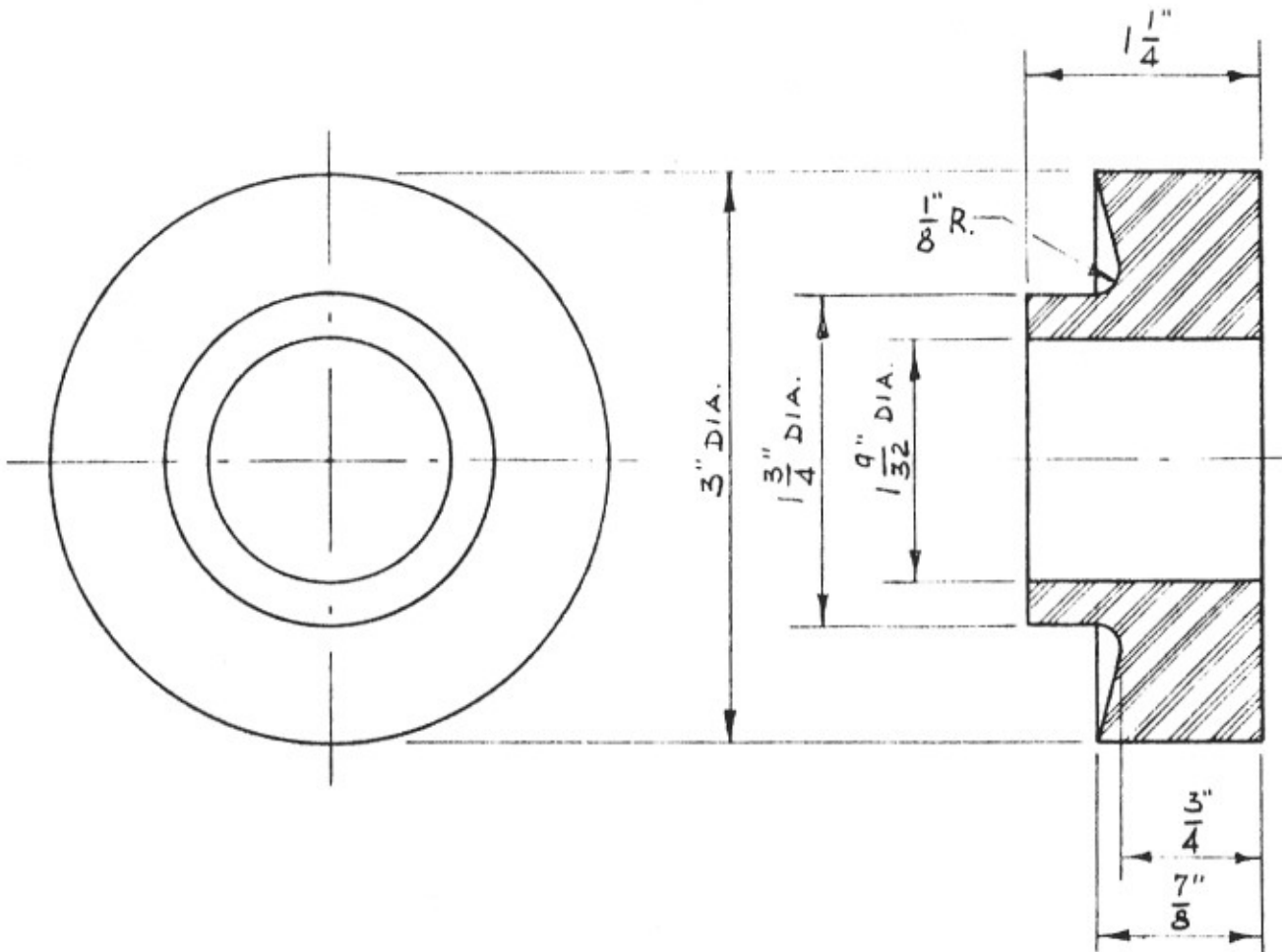
Distributor for

UNIROYAL

PAD - BOLSTER ANCHOR

OEM. # GSI-25104-12

ORDERING REFERENCE - PPC - D4004



MATERIAL: RUBBER

POWER PARTS COMPANY

1860 NORTH WILMOT AVENUE
CHICAGO, ILLINOIS 60647

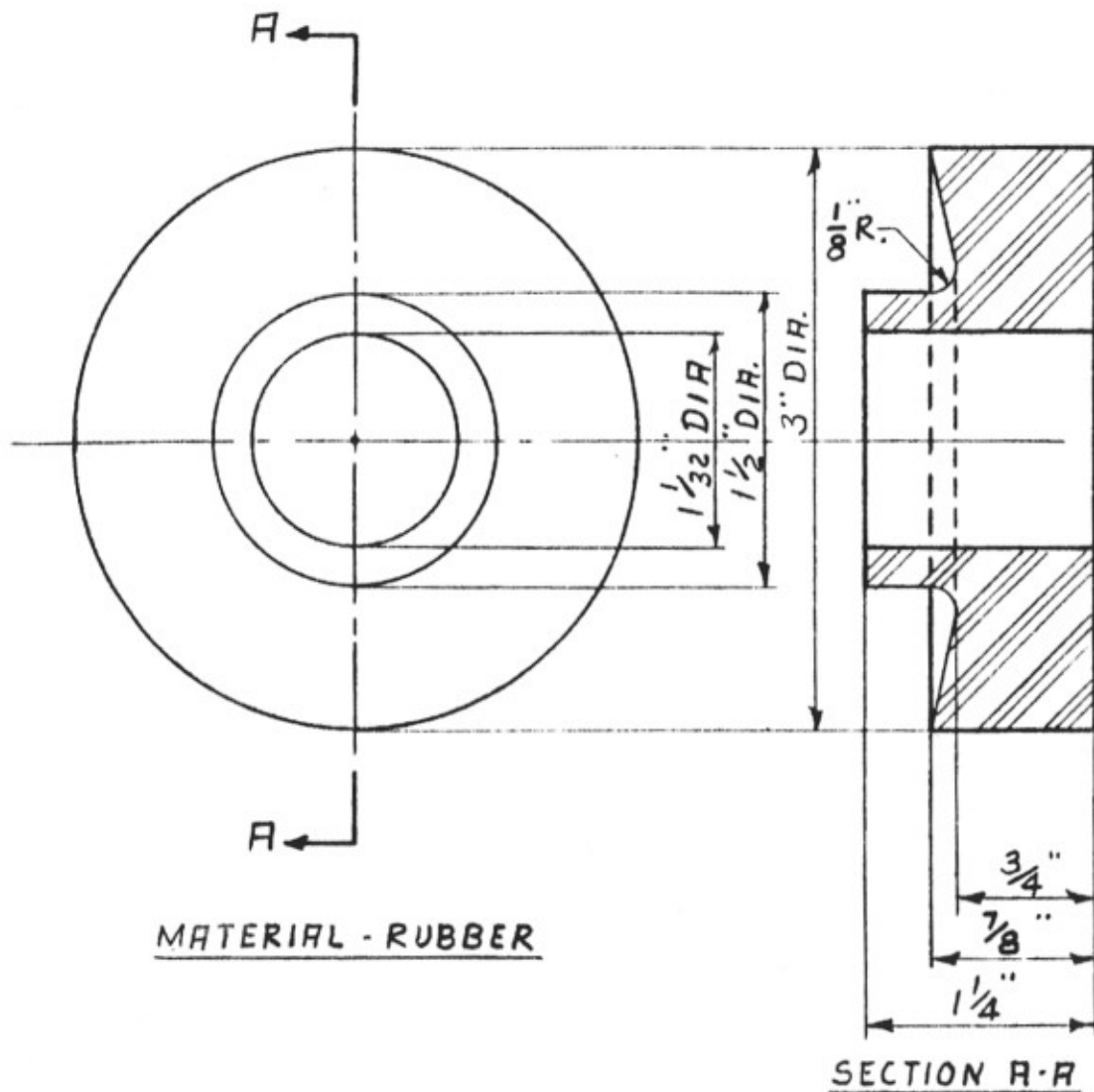
Distributor for

UNIROYAL

PAD-BOLSTER ANCHOR

OEM NO. GSI 25104-13

ORDERING REFERENCE PPC 11233



NOTE:

FOUR PADS REQ'D PER ANCHOR

POWER PARTS COMPANY

1860 NORTH WILMOT AVENUE
CHICAGO, ILLINOIS 60647

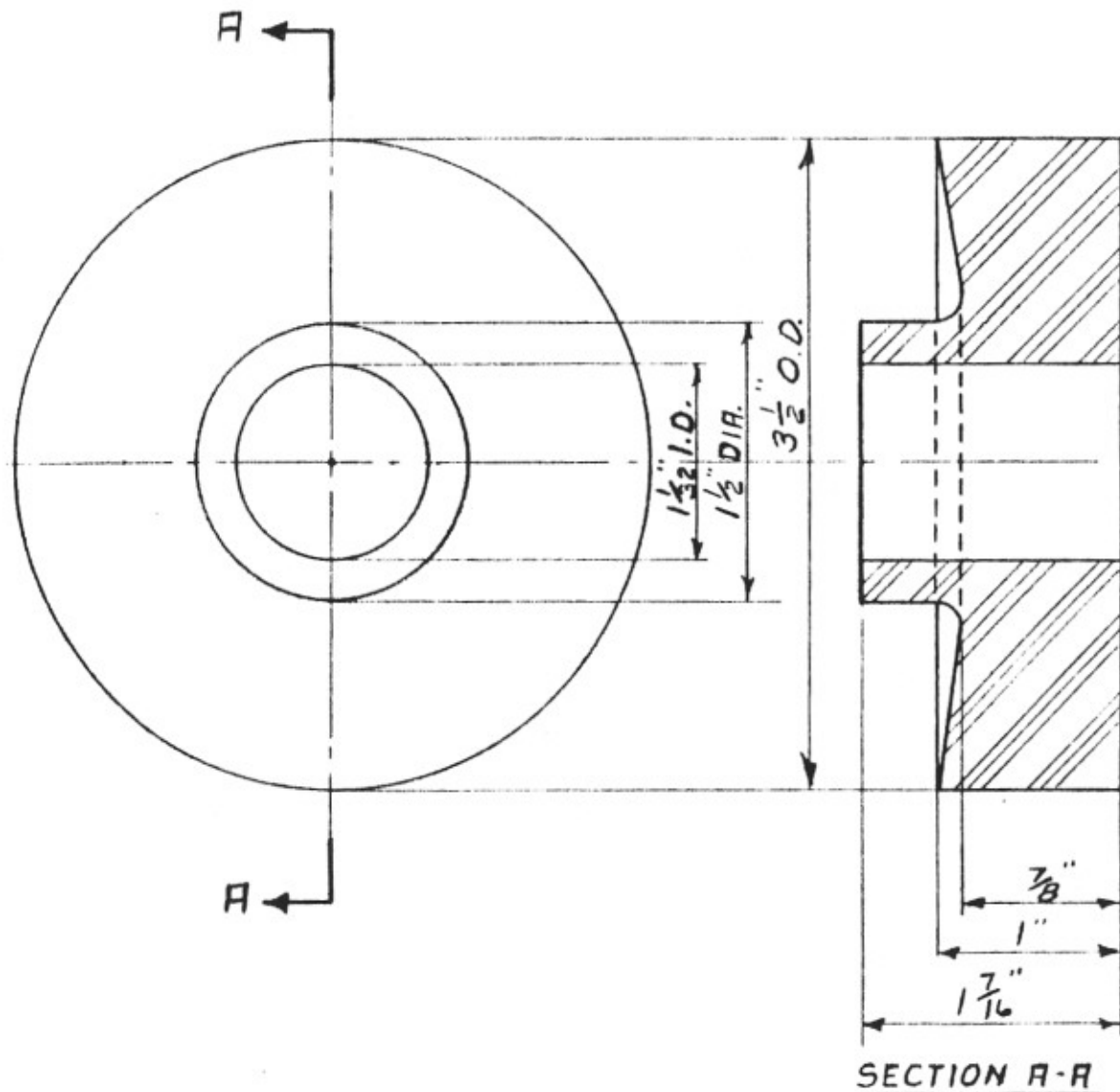
Distributor for

UNIROYAL

PAD - BOLSTER ANCHOR

O.E.M. # G51-25104-14

ORDERING REFERENCE - PPC-8226



SECTION A-A

MATERIAL - RUBBER

CLASS	SERIES
COACH	467
TOURIST	5740-5754
M&E	1208-1230
BAGG. DORM	1309-1316
LUNCH-LOUNGE	162-167, 172-173
DINER	113-126
COACH	480-554, 454-478
DINER-LOUNGE	168, 170-171
EXPRESS	1317-1336
MAIL	2152-2153
PARLOR	190-197
" OBS.	186-189
CAFE PARLOR	180-185
BUSINESS	MILW. & WISC.
LOUNGE	160-161
P&B	206-207
PULLMAN	2-32

NOTE - 32 PADS PER CAR -
 REFERENCE - C.M. ST.P. & P.R.R. DWG. 6508-B

POWER PARTS COMPANY

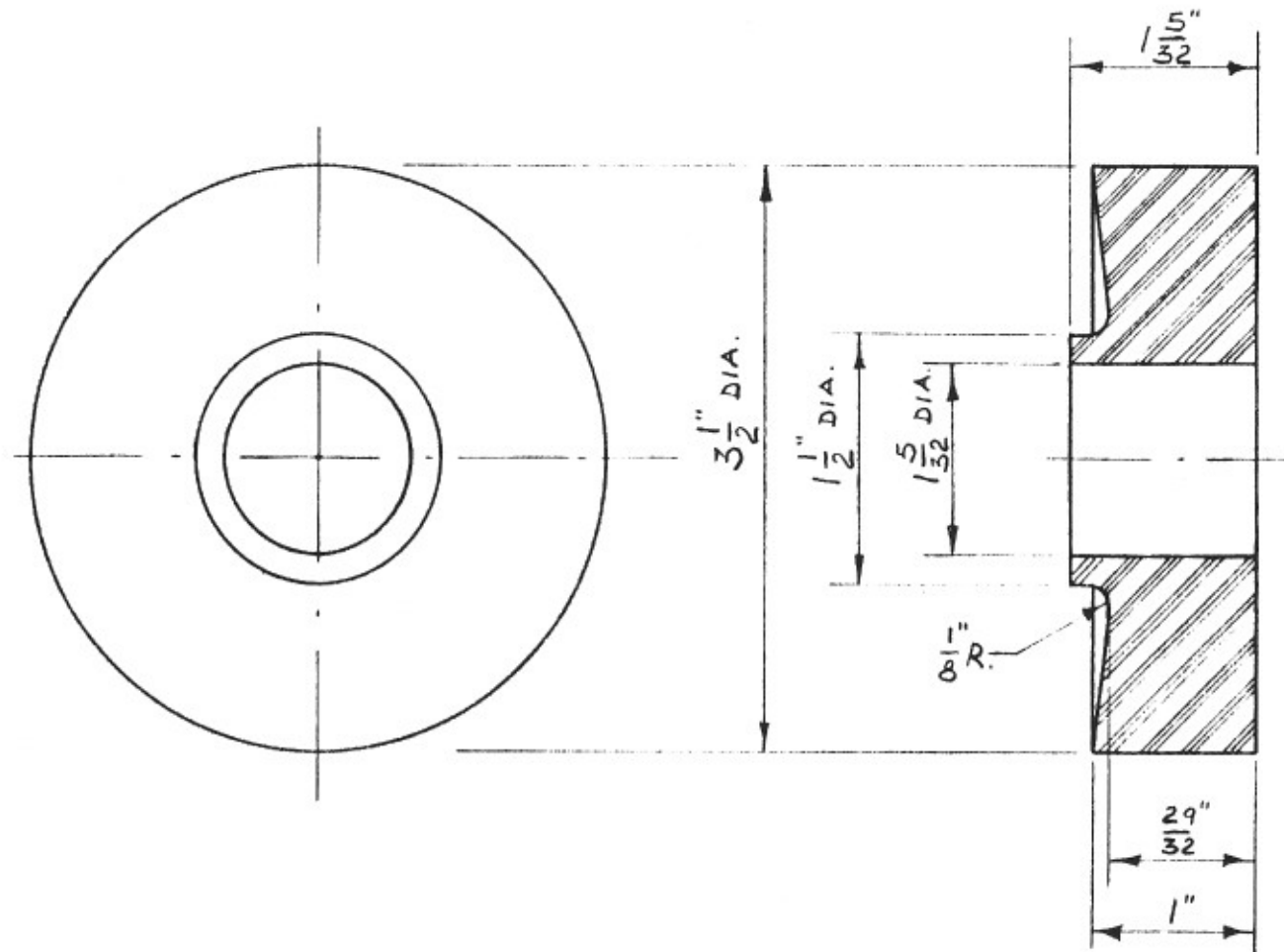
1860 NORTH WILMOT AVENUE
 CHICAGO, ILLINOIS 60647

Distributor for
UNIROYAL

PAD - BOLSTER ANCHOR

OEM #G51-25104-15

ORDERING REFERENCE - PPC-D4559



MATERIAL: RUBBER

POWER PARTS COMPANY

1860 NORTH WILMOT AVENUE
CHICAGO, ILLINOIS 60647

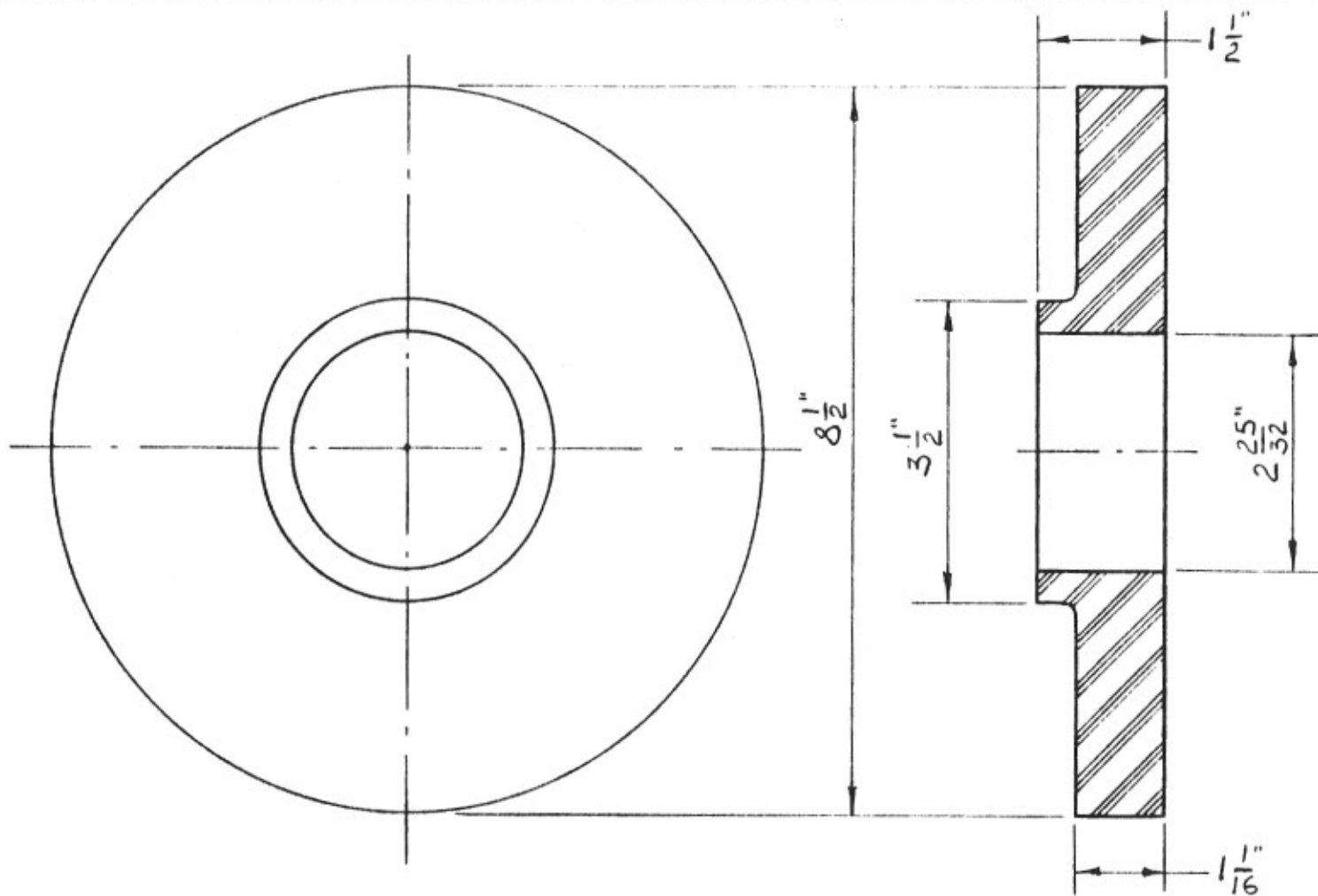
Distributor for

UNIROYAL

PAD - BOLSTER ANCHOR

OEM NO. GSI 25104-20

ORDERING REFERENCE PPC 11234



MATERIAL: RUBBER

POWER PARTS COMPANY

1860 NORTH WILMOT AVENUE

CHICAGO, ILLINOIS 60647

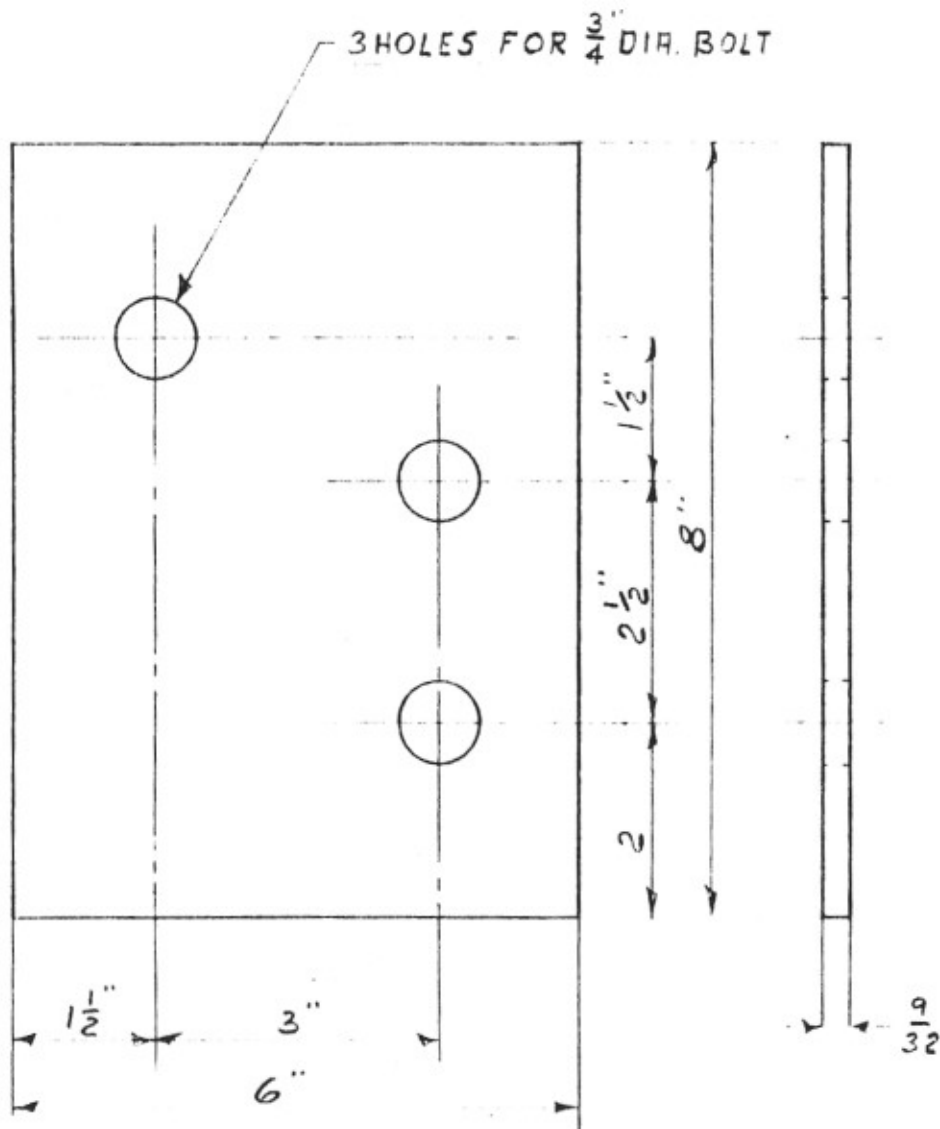
Distributor for

UNIROYAL

PAD-MOTOR TRUCK ANCHOR

OEM NO. GSI 25104-26

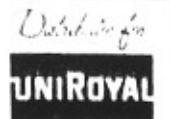
ORDERING REFERENCE PPC 10556



MATERIAL - UNIROYAL 15175

POWER PARTS COMPANY

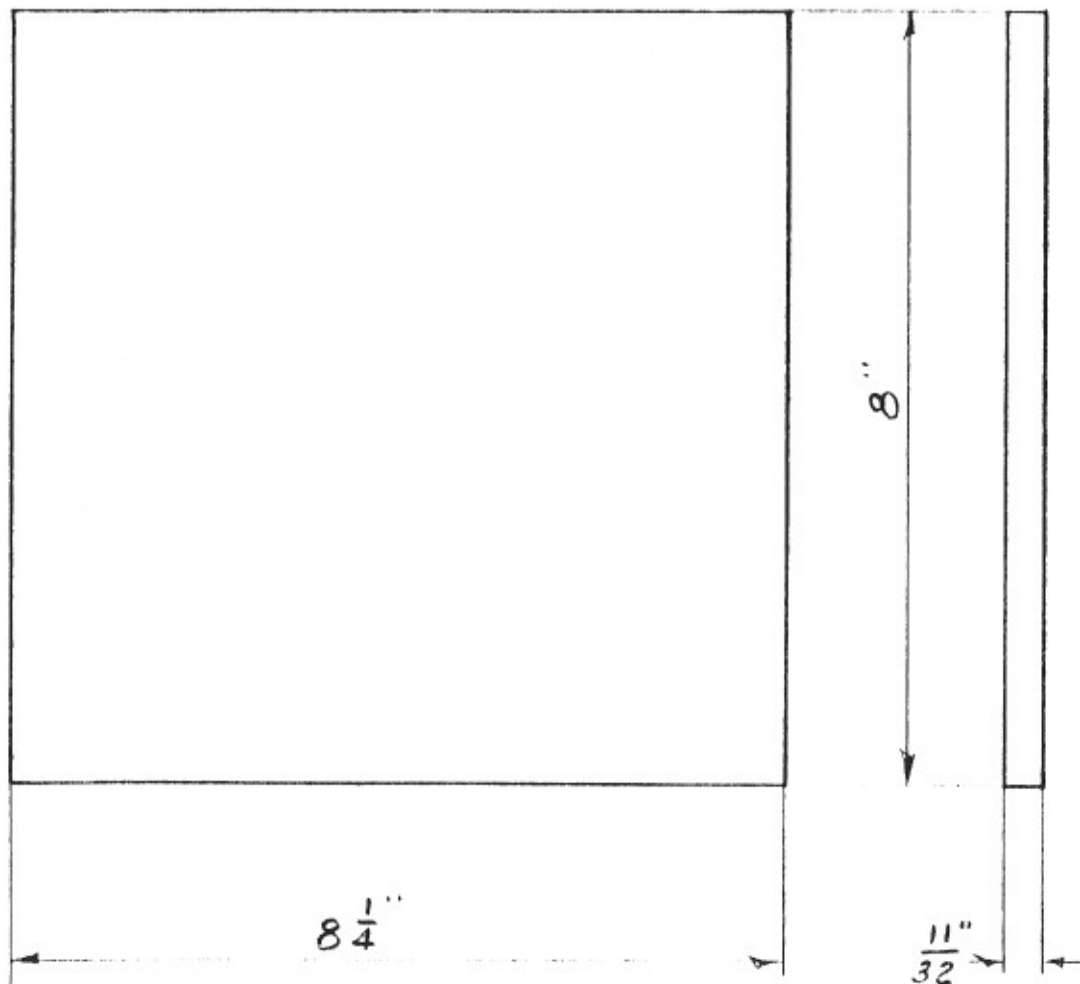
1860 NORTH WILMOT AVENUE
CHICAGO, ILLINOIS 60647



PRD

OEM # 451-26463-B

ORDERING REFERENCE - PPC-8805



MATERIAL - UNIROYAL #15175

POWER PARTS COMPANY

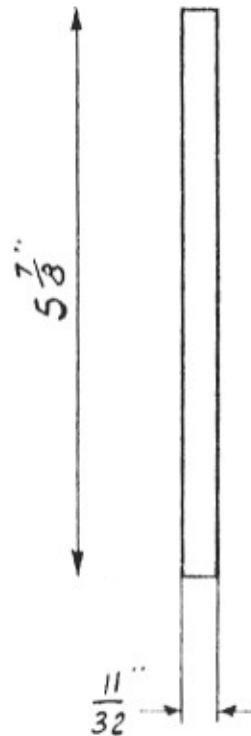
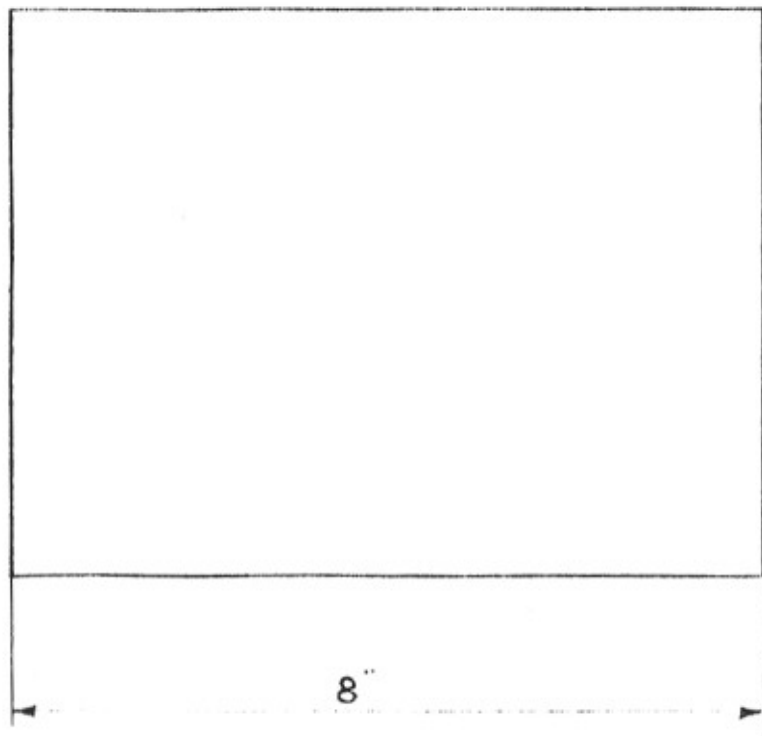
1860 NORTH WILMOT AVENUE
CHICAGO, ILLINOIS 60647

Distributor for
UNIROYAL

PRD - EQUILIZER SEAT - JOURNAL BOX

O.E.M. # HYATT 2-E-3209-1

ORDERING REFERENCE - PPC-8639



MATERIAL · UNIROYAL # 15175

POWER PARTS COMPANY

1860 NORTH WILMOT AVENUE
CHICAGO, ILLINOIS 60647

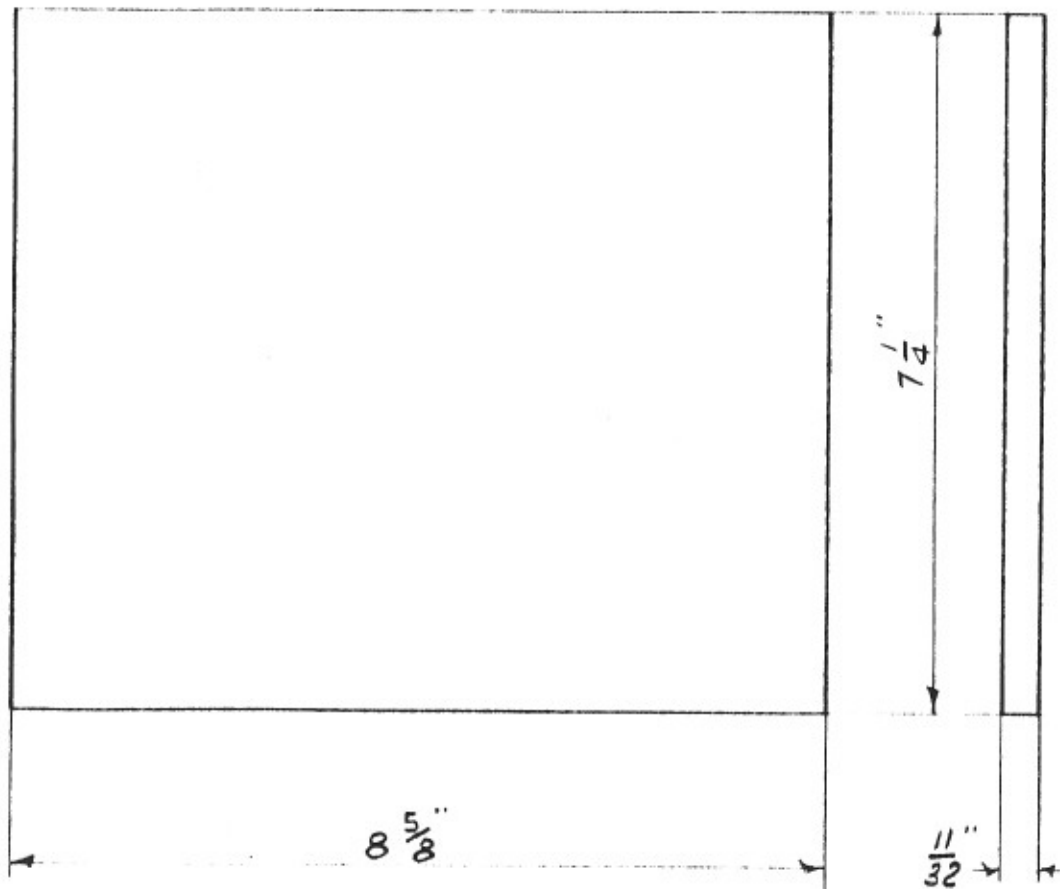
Distributor for

UNIROYAL

PPD - EQUALIZER SEAT - JOURNAL BOX

O.E.M. # HYATT - 2E - 3209 - 21

ORDERING REFERENCE · PPC - 8341



MATERIAL - UNIROYAL # 15175

POWER PARTS COMPANY

1860 NORTH WILMOT AVENUE
CHICAGO, ILLINOIS 60647

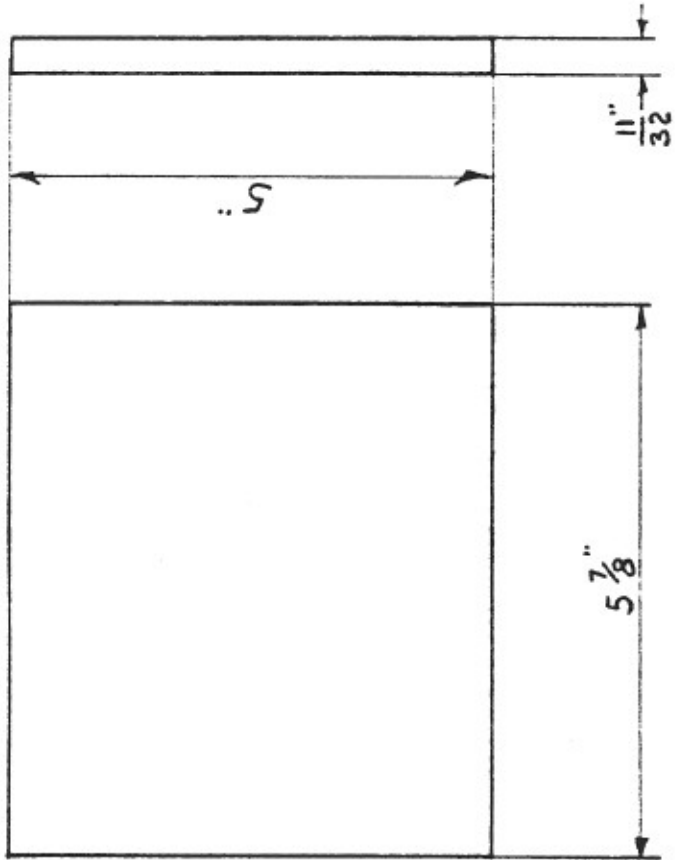
Distributor for

UNIROYAL

PAD-EQUALIZER SEAT- JOURNAL BOX

O.E.M. # HYATT-2E-3209-22

ORDERING REFERENCE - PFC-8659



MATERIAL - UNIROYAL #15175

POWER PARTS COMPANY

1860 NORTH WILMOT AVENUE
CHICAGO, ILLINOIS 60647

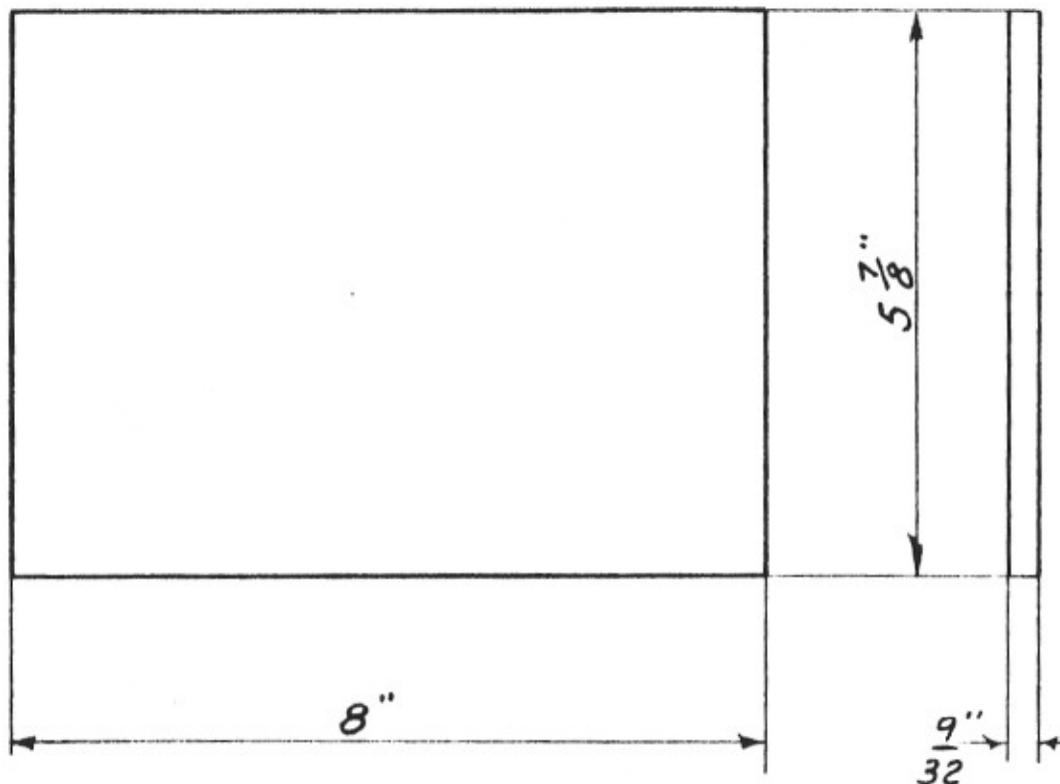
Distributor for

UNIROYAL

PRD - EQUURLIZER SERT - JOURNAL BOX

O.E.M. # HYATT-2E-3209-24

ORDERING REFERENCE - PPC-8661



MATERIAL - UNIROYAL #15175

CLASS	USED ON
SLEEPERS	1941 & 1948 EQUIPMENT
POSTAL BAGG	5900-5902, 5811-5813
BAGG DORM	6000-6010
DINER	4800-4816
DORM. CLUB	6100-6105, 6107
CLUB LGE.	1500-1501
CLUB	1504

REFERENCE

U.P. DWG. 300 CB 24161

POWER PARTS COMPANY

1860 NORTH WILMOT AVENUE

CHICAGO, ILLINOIS 60647

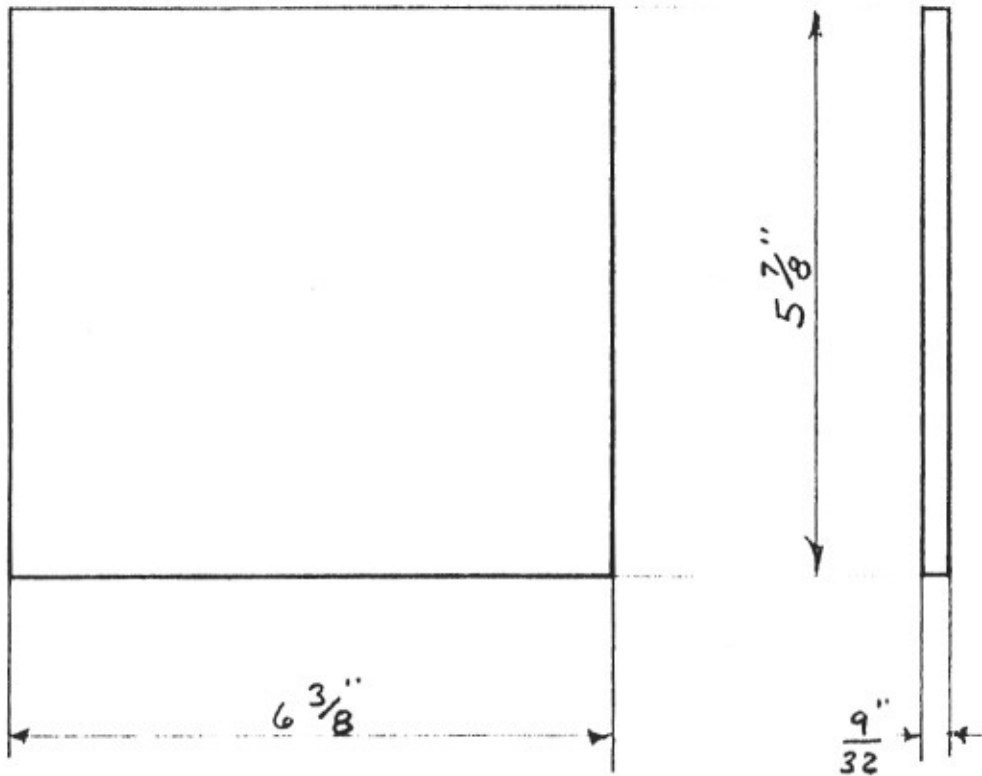
Distributor for

UNIROYAL

PAD-EQUALIZER SEAT - JOURNAL BOX

O.E.M. # HYATT-2E-3209-25

ORDERING REFERENCE - PPC-5074



MATERIAL - UNIROYAL #15175

POWER PARTS COMPANY

1860 NORTH WILMOT AVENUE

CHICAGO, ILLINOIS 60647

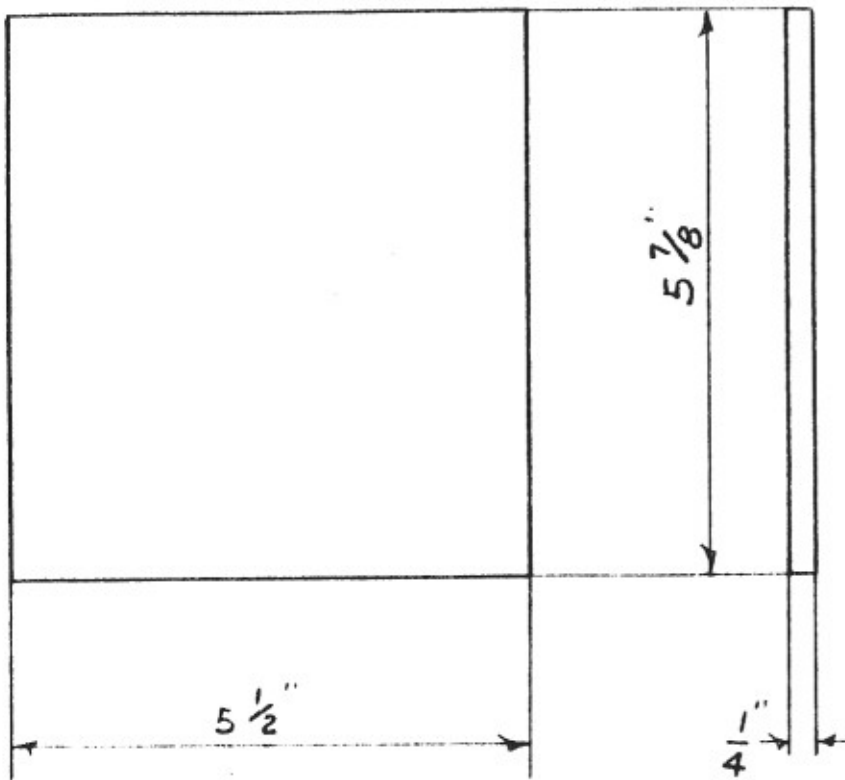
Distributor for

UNIROYAL

PRD-EQUALIZER SEAT- JOURNAL BOX

O.E.M # HYATT 2-E-3209-29

ORDERING REFERENCE - PPC-8057



MATERIAL - UNIROYAL #15175

POWER PARTS COMPANY

1860 NORTH WILMOT AVENUE
CHICAGO, ILLINOIS 60647

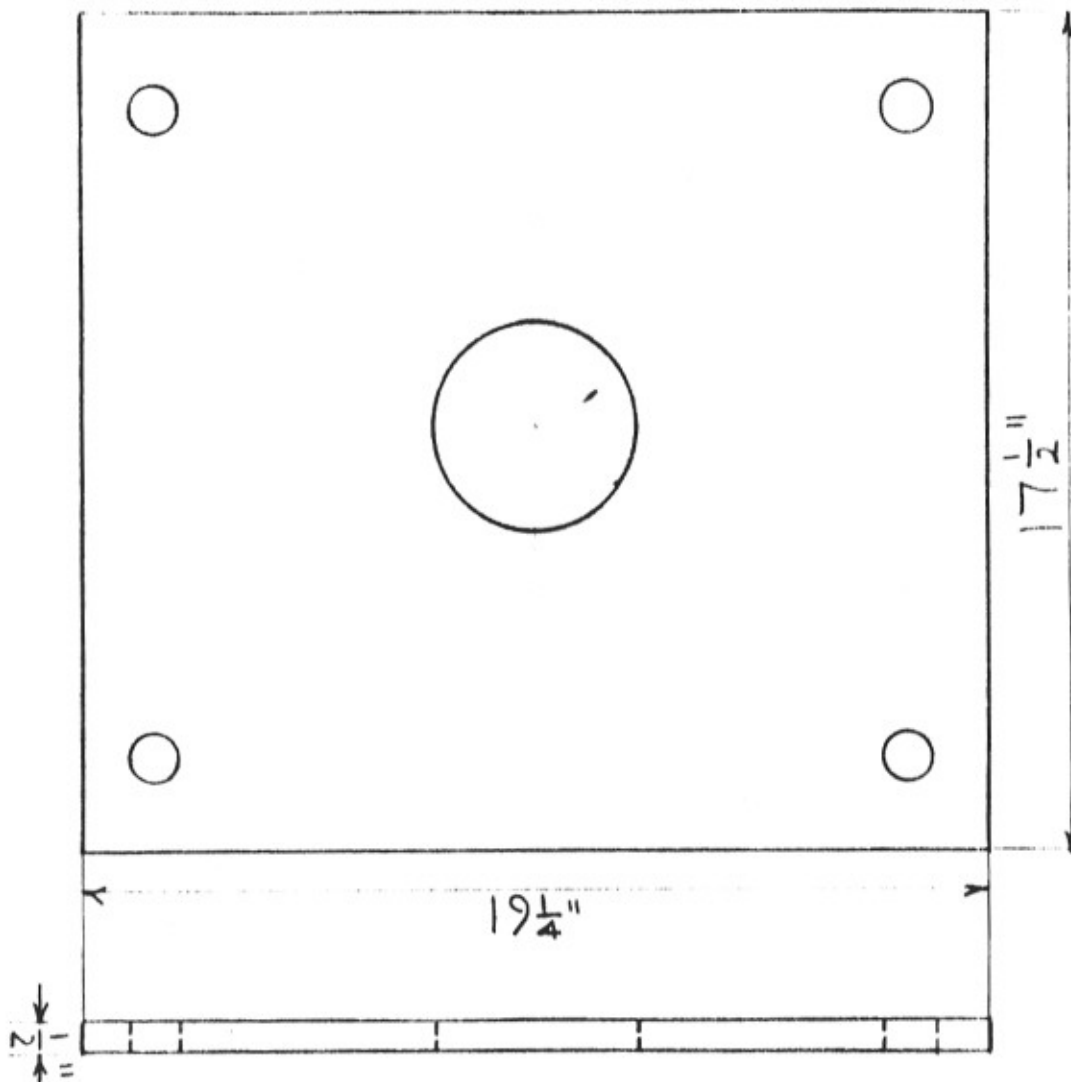
Distributor for



PHD - EQUALIZER SEAT - JOURNAL BOX

O.E.M. # HYHTT 2-E-3209-36

ORDERING REFERENCE - PPC - 8353



USED ON	
430-433	DINERS-KITCHEN END-6"X11" JOURNALS
510-516	MAIL
339-349	DAY-NITE COACHES
324-328	COACHES
353-361	
410-412	COFFEE-SHOP-PARLOR
425-428	DINERS
456 & 457 434 & 438	OBSER, PARLOR
475	PARLOR
802-804	BAGG. - MAIL
820	BAGG. DORMITORY
852 & 853 854-858	BAGGAGE
OBS. LOUNGE SLEEPER: - GOLDEN VISTA, GOLDEN DIVAN, LA MIRADA	
SLEEPERS: - LAQUINTA, N LAKES, NORTH WOODS, PLAINSMEN, GRANGER, GULF COSTA, LA JOLLA, LA COSTA, LA PALMA	

POWER PARTS COMPANY
 1860 NORTH WILMOT AVENUE
 CHICAGO, ILLINOIS 60647



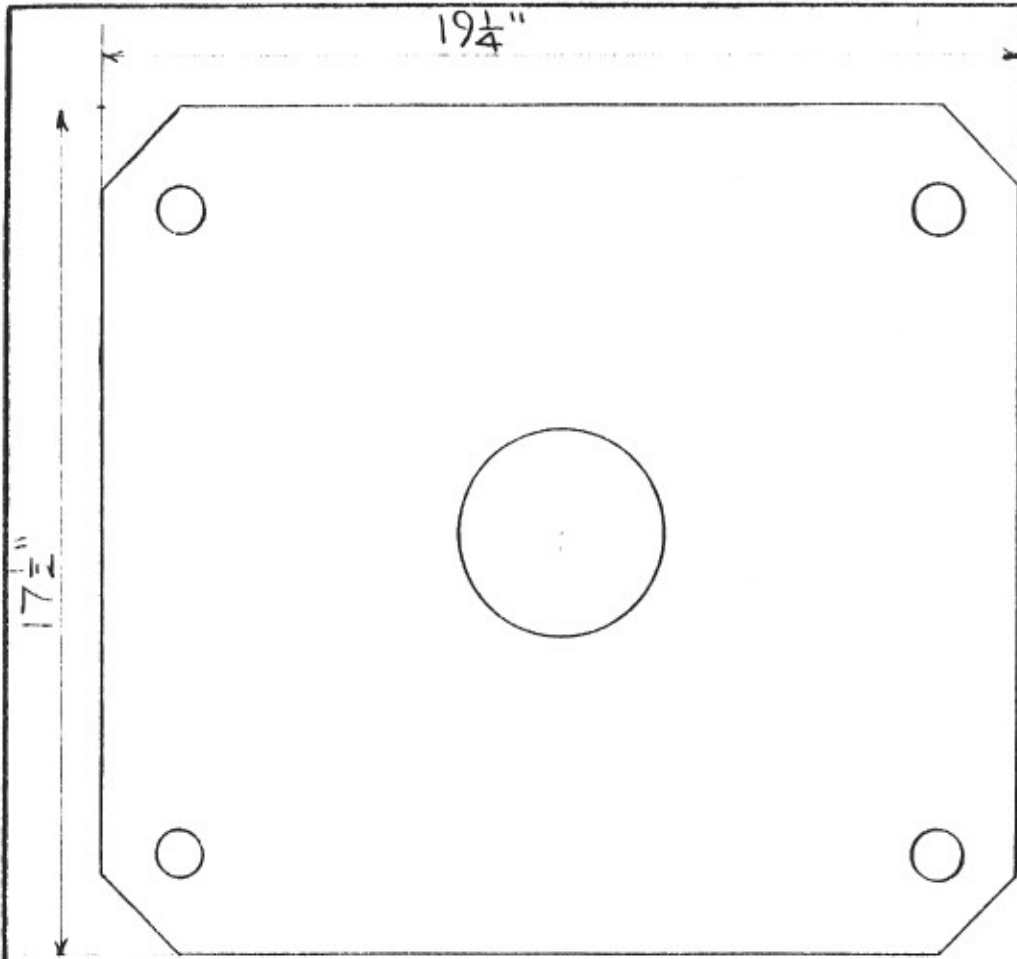
PAD - CENTER PLATE

O.E.M # PULLMAN STD 104-T-5

ORDERING REFERENCE P.P.C. 6951

MATERIAL
UNIROYAL 15175

REFERENCE
ROCK ISLAND DWG 310-305



MATERIAL
UNIROYAL 15175

POWER PARTS COMPANY

1860 NORTH WILMOT AVENUE

CHICAGO, ILLINOIS 60647

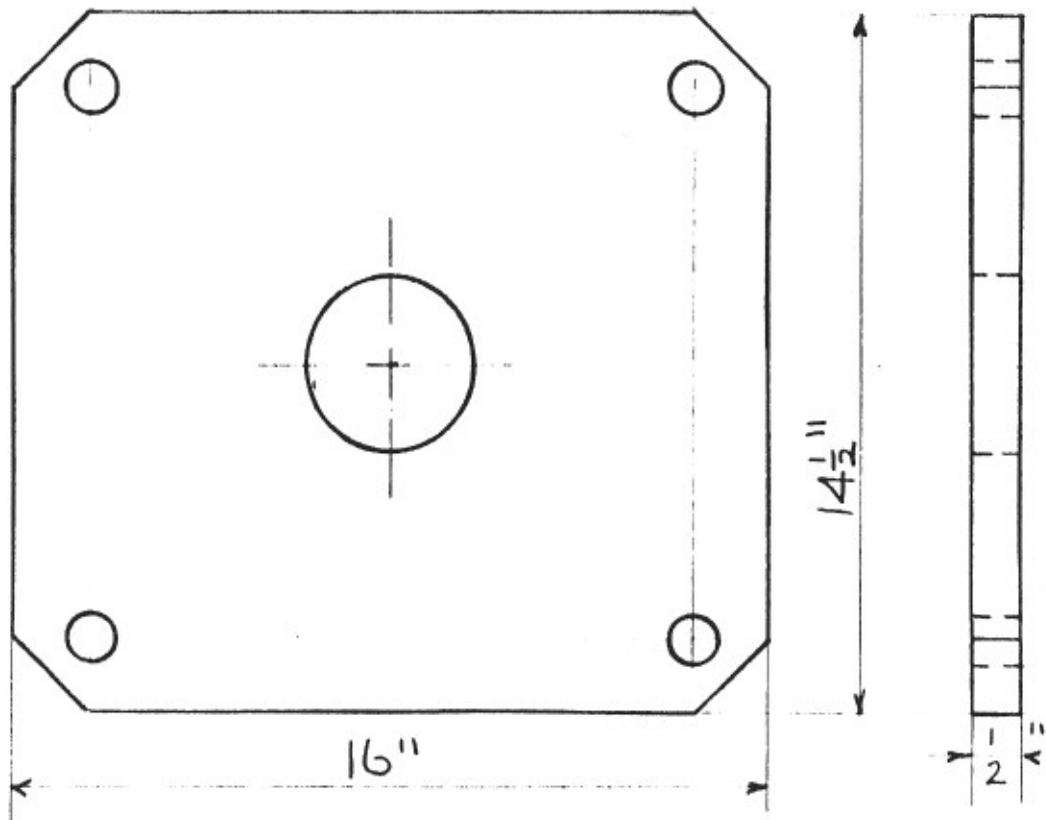
Distributor of

UNIROYAL

PAD-TRUCK BOLSTER-CENTER PLATE

O.E.M. # PULLMAN STD III-T-67

ORDERING REFERENCE P.P.C. 8521



REFERENCE
ILL. CENTRAL R.R. DWG. J3941

MATERIAL
UNIROYAL 15175

POWER PARTS COMPANY

1860 NORTH WILMOT AVENUE

CHICAGO, ILLINOIS 60647

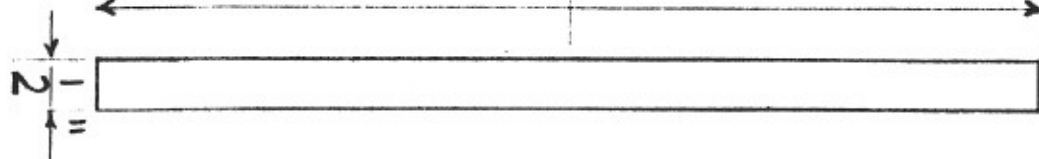
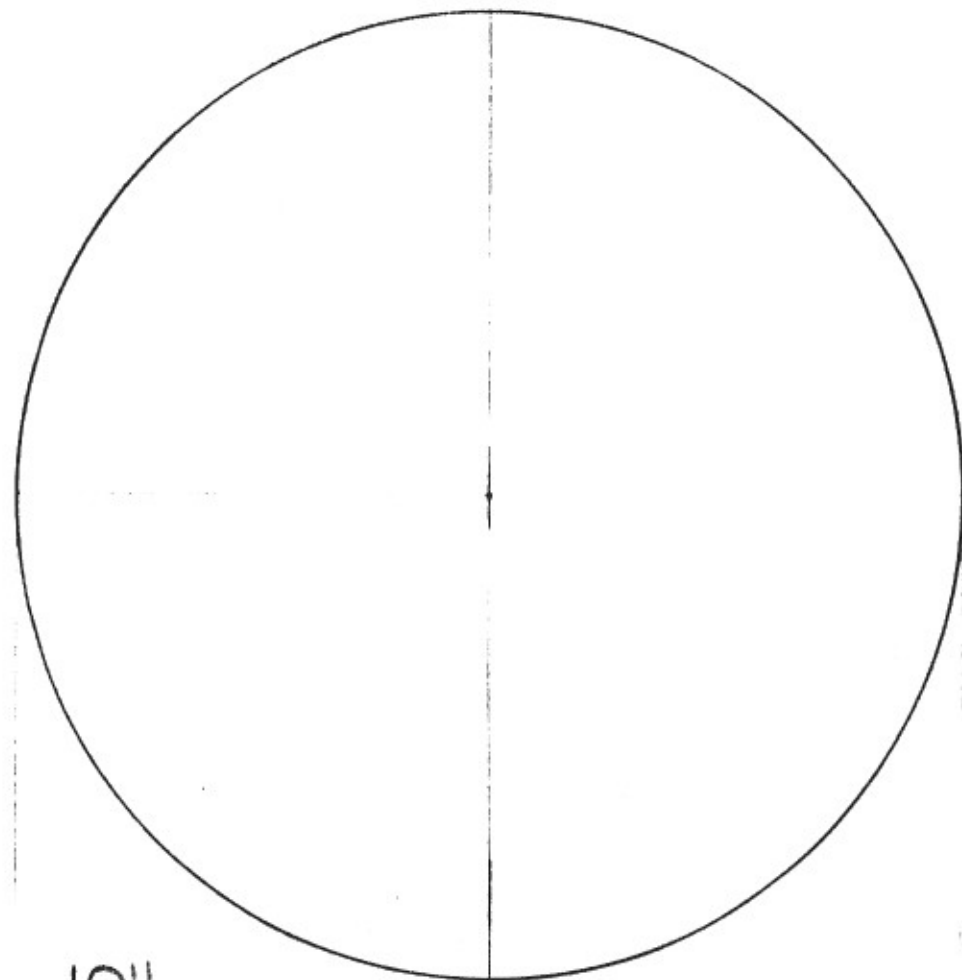
Distributor for

UNIROYAL

PAD-TRUCK CENTER PLATE

O.E.M.# FULLMAN STD. 116-A-29

ORDERING REFERENCE P.P.C. 10594



MATERIAL-UNIROYAL 15175

USED ON

6739	7509-10-11	NORTHERN PACIFIC
6765		" "
6781		" "
6988		" "
6994		" "
6990		500 LINE
6829	4163	S.P. & S.R.V.
6826	ALL	"

POWER PARTS COMPANY

1860 NORTH WILMOT AVENUE
CHICAGO, ILLINOIS 60647

Distributor for

UNIROYAL

PAD-BOLSTER SPRING

O.E.M.# PULLMAN STD. 128-A-10

ORDERING REFERENCE P.P.C. 8239