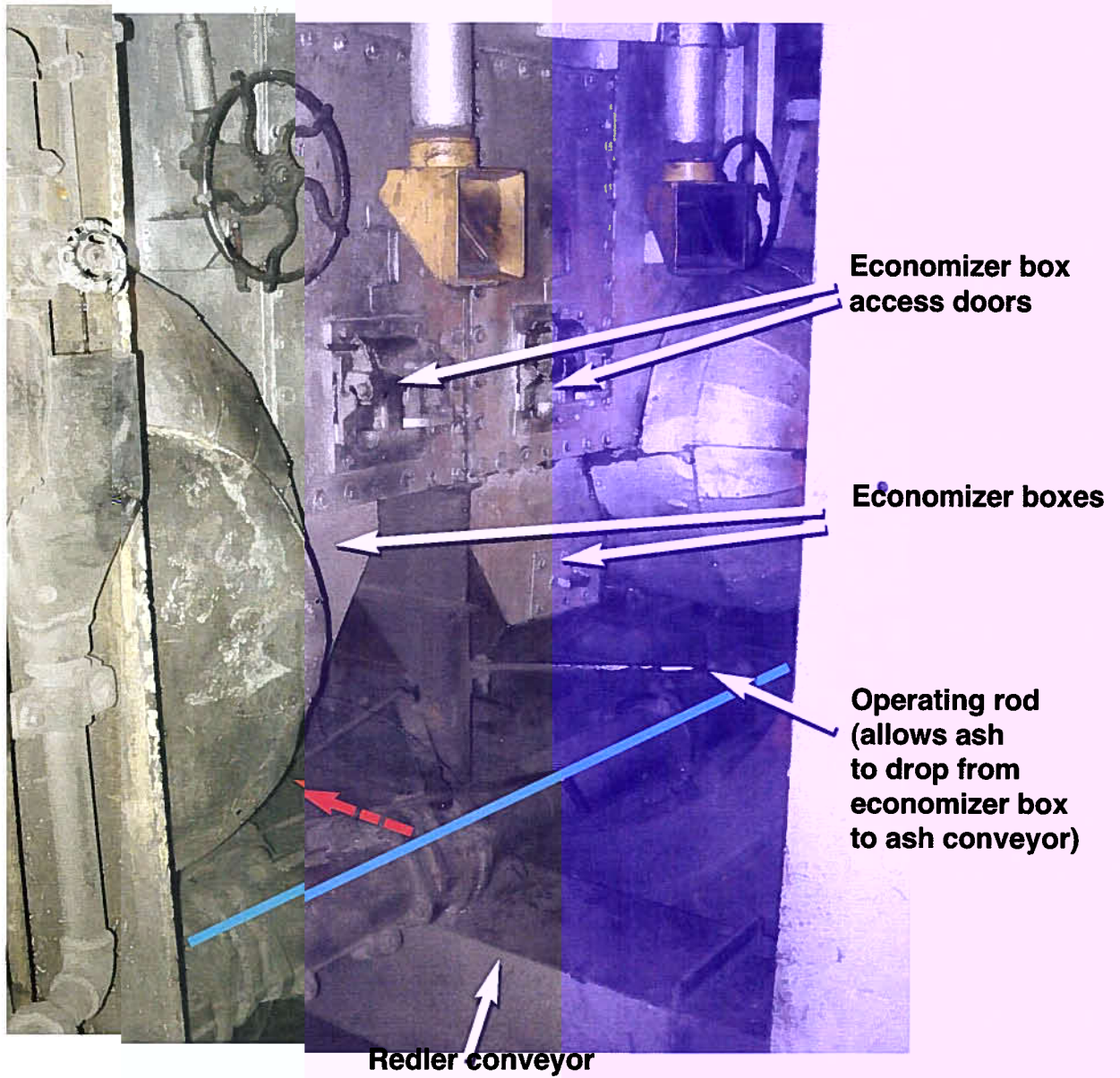


1

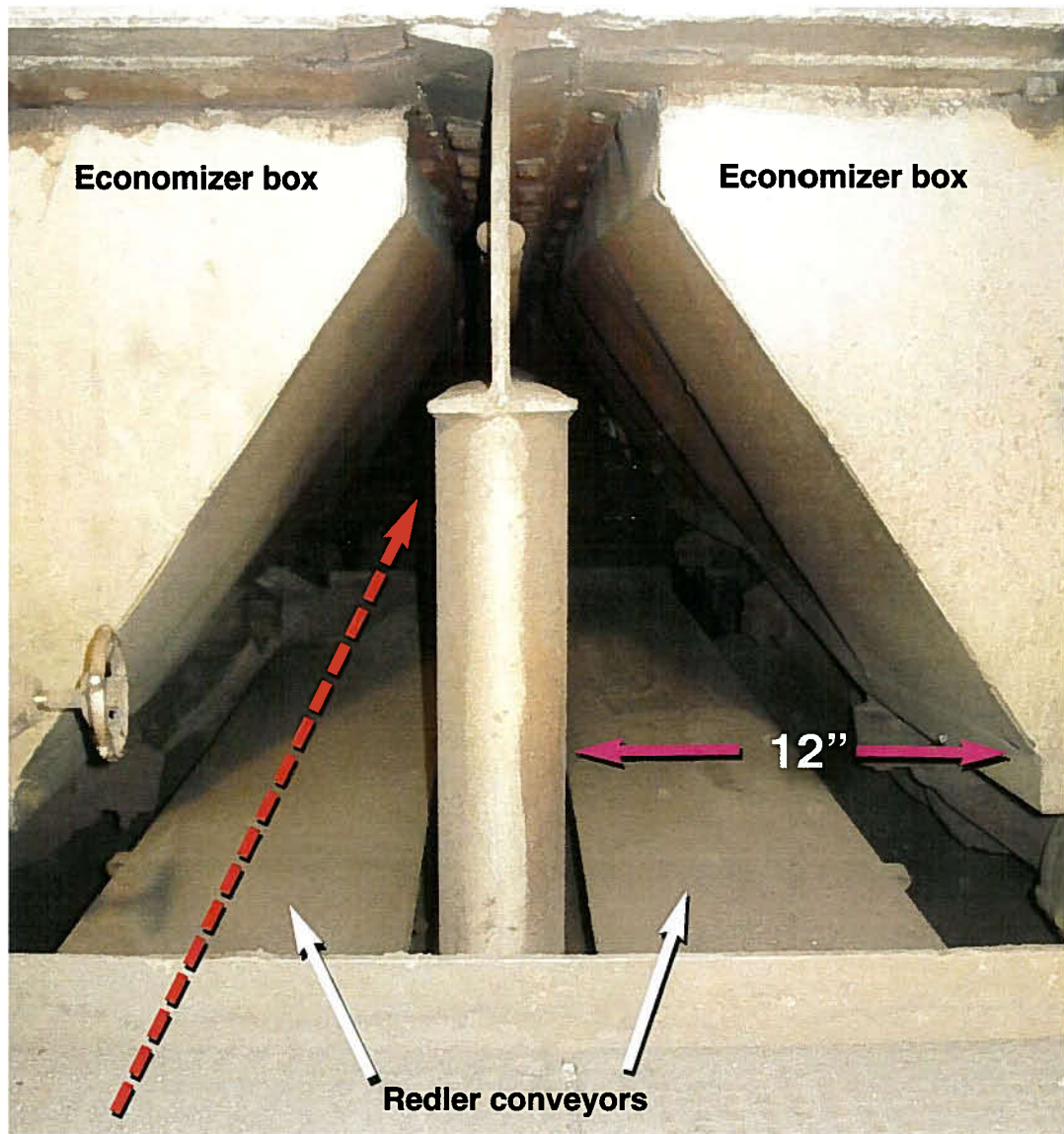
FIRING AISLE, FORWARD PORT BOILER (looking inboard)

Note ash receivers in deck. Proposed re-routing of ash conveyor would exit at top right of photograph (see detail in photo 2).



2

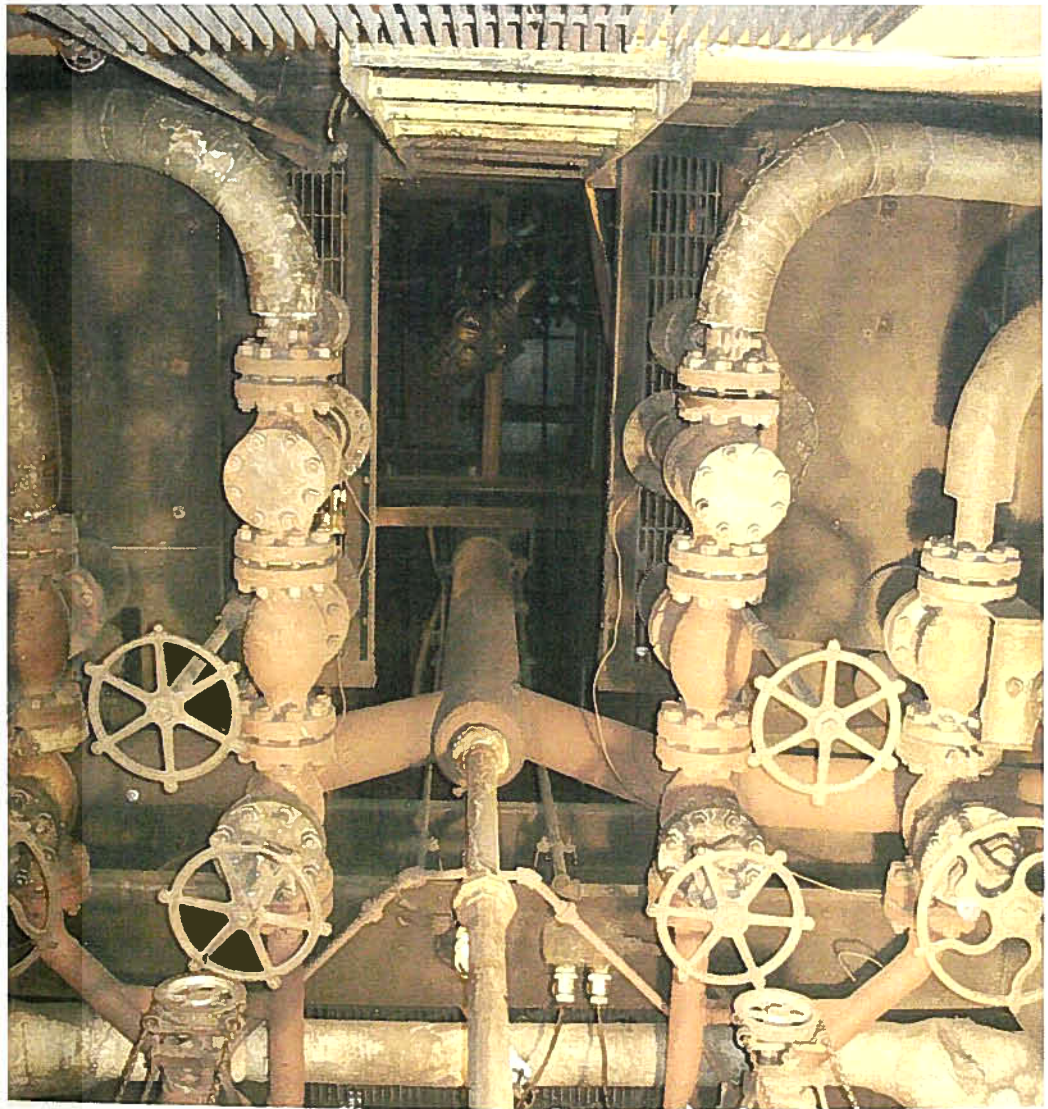
**FIRING AISLE ON CENTER LINE
(looking at forward boilers)**



3

SPACE UNDERNEATH BOILERS

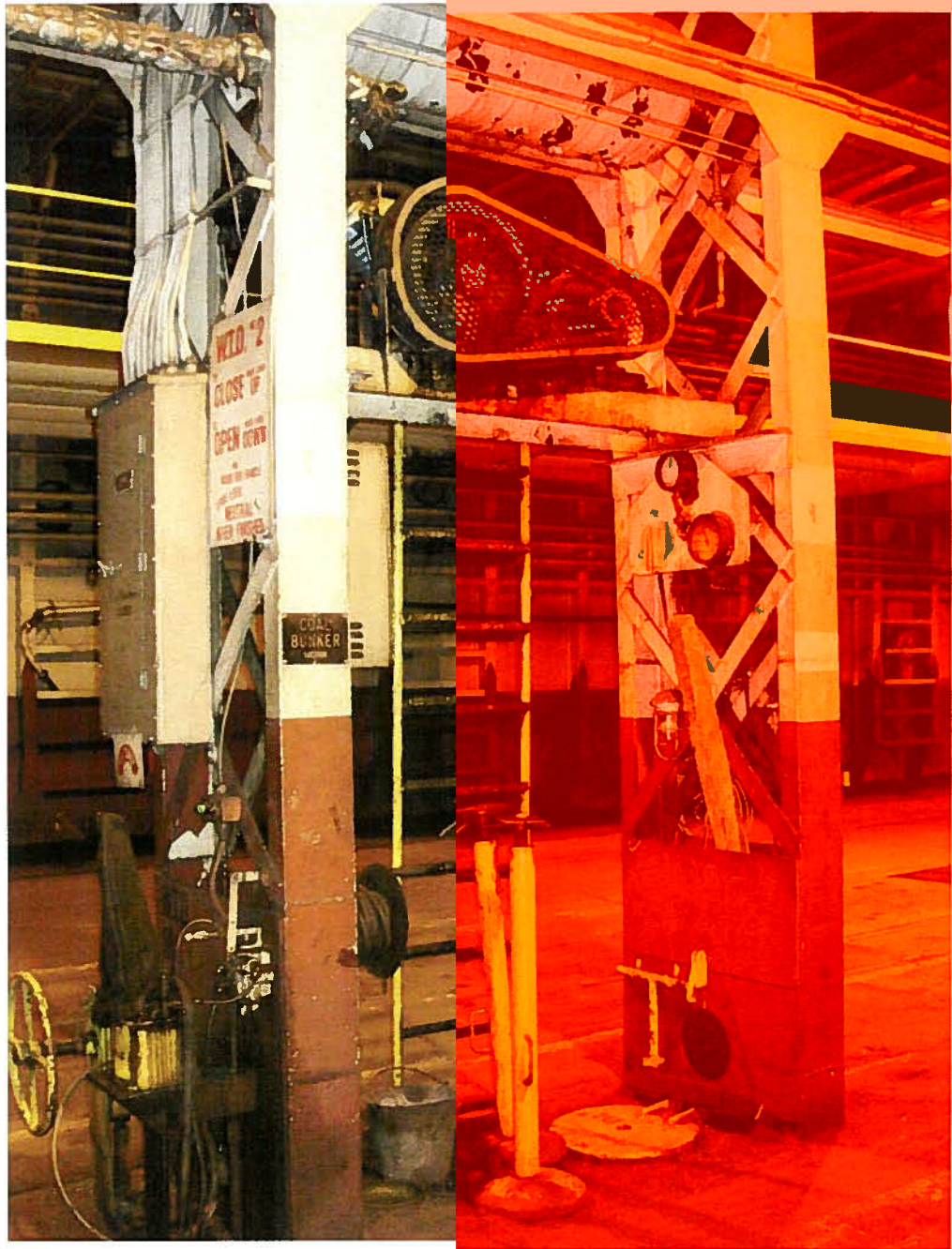
Space is tight. This is a possible route for the proposed ash conveyor modification.



4

FORWARD OF BOILERS

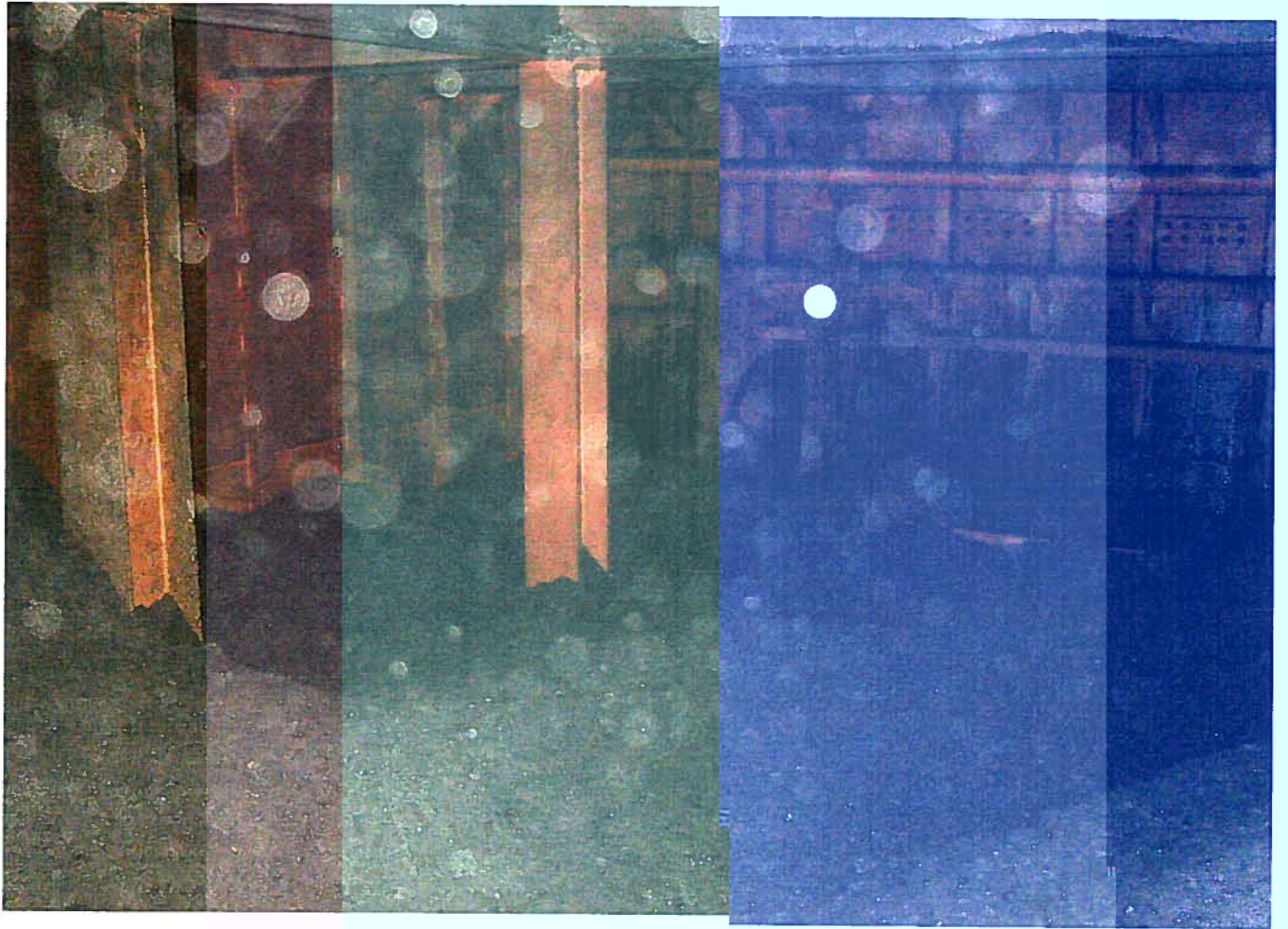
Looking up. This route has some advantages with space and penetration of watertight boundaries. The 38' vertical rise may be too much lift for existing vacuum capacity.



7

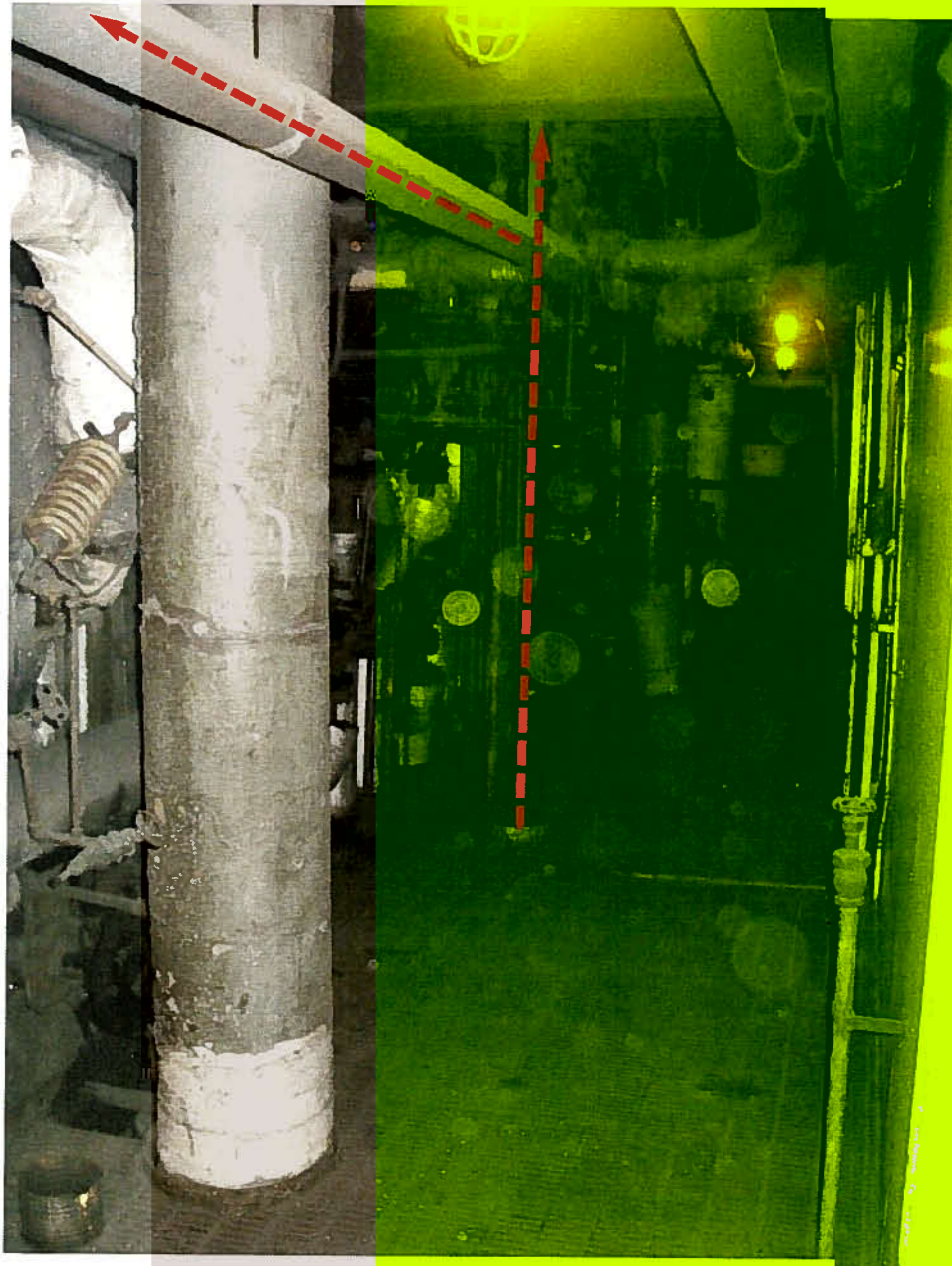
CAR DECK, FORWARD OF CASING

This air compressor would need to be relocated to make room for the proposed separator that would remove particulate from the airstream and direct it toward the storage bins.



8

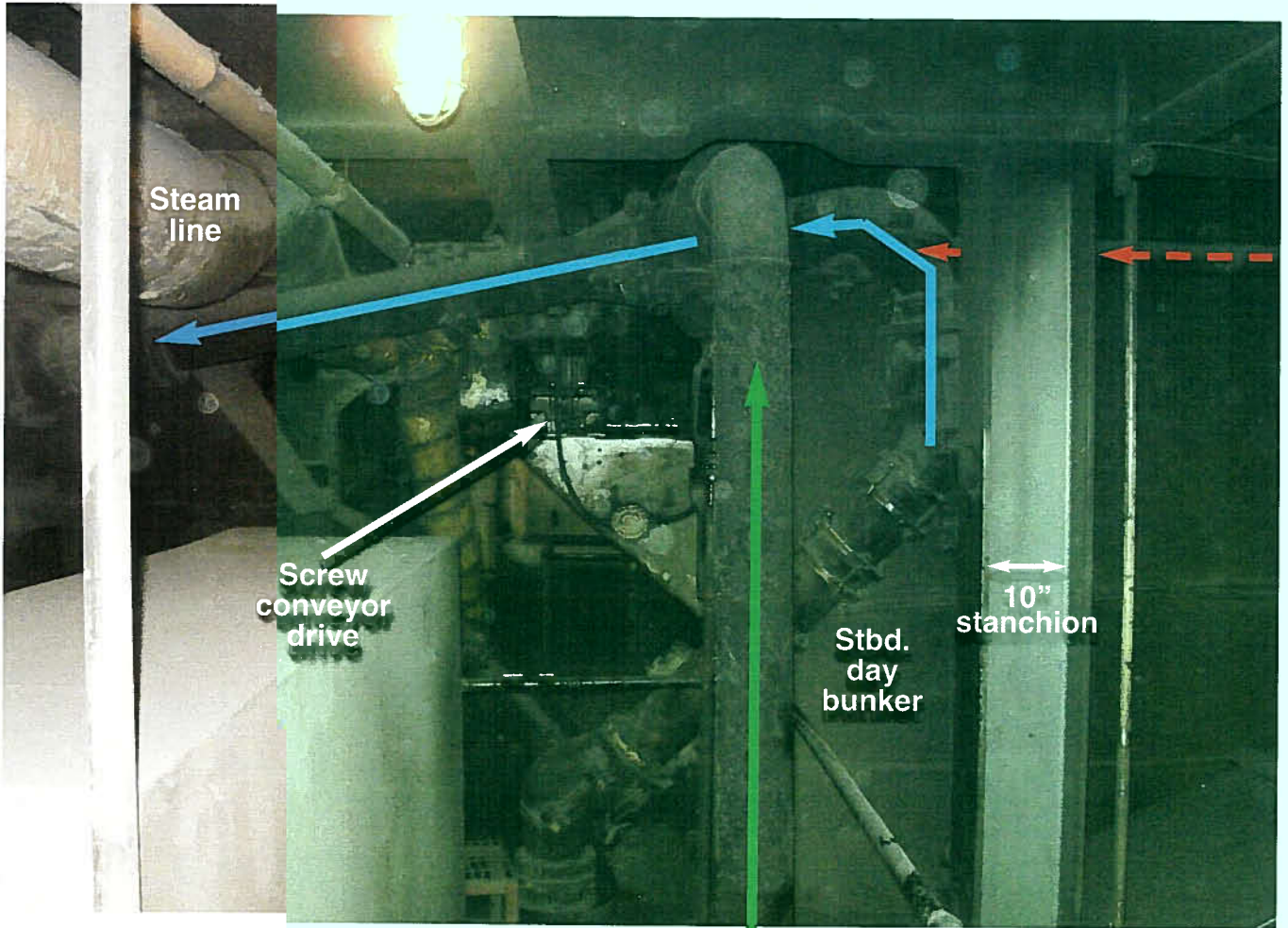
COAL BUNKER



9

**UPPER LEVEL OF BOILER ROOM,
FORWARD OF BOILERS**

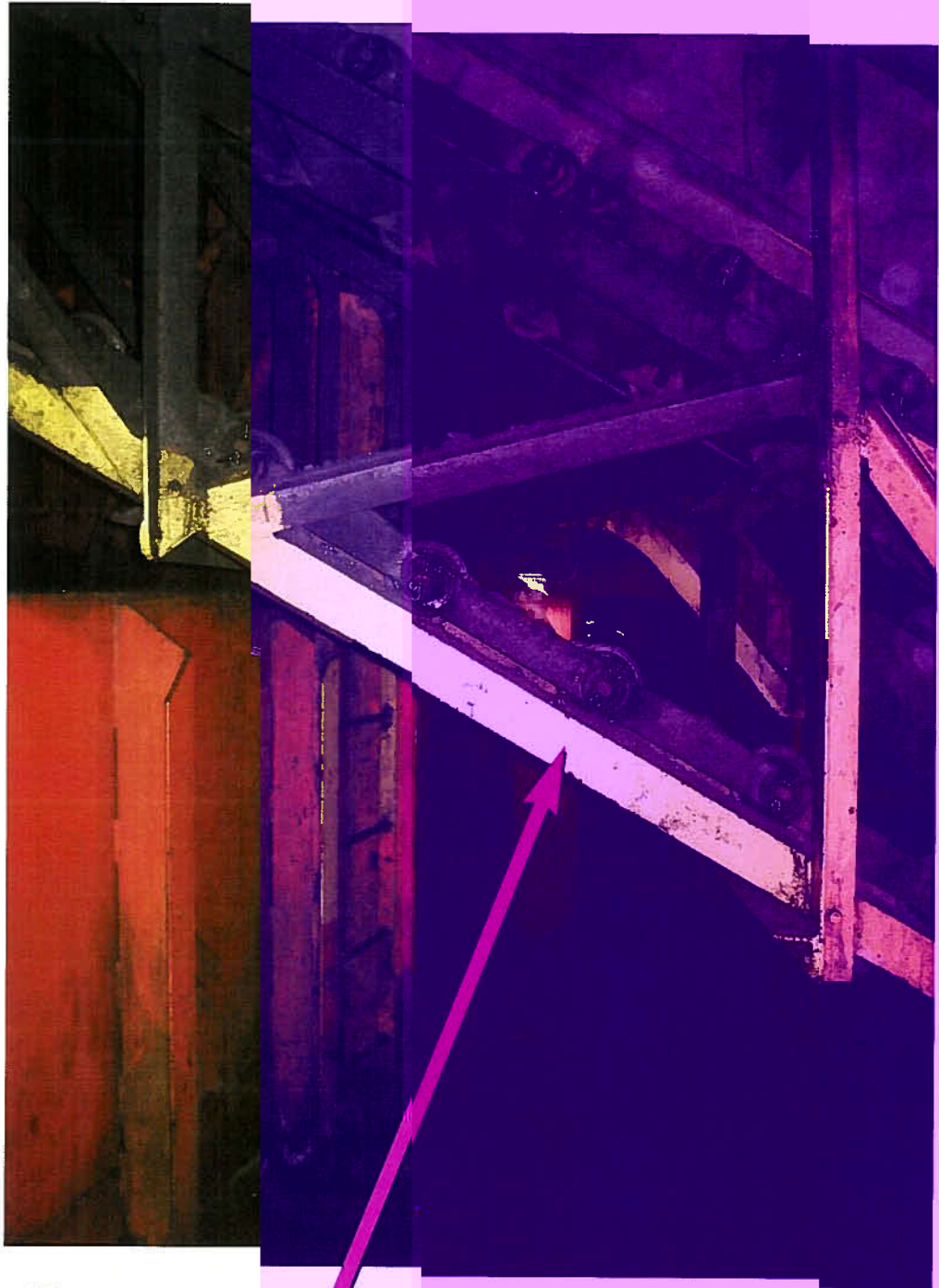
**Proposed routing of new conveyor piping would need
to transit this area.**



10

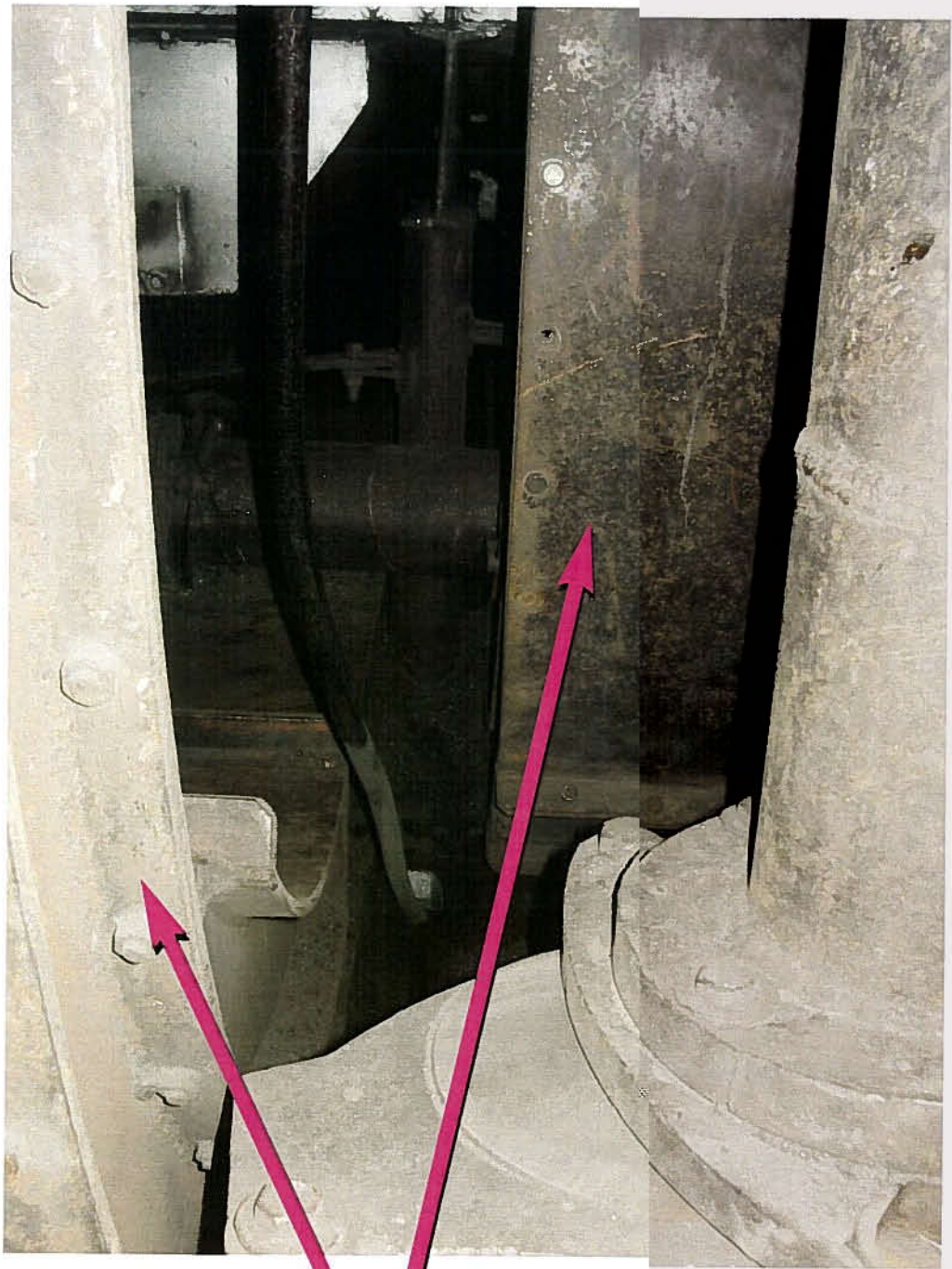
water line from pump system

EXHAUSTER



11

PORT SIDE ASH CONVEYOR



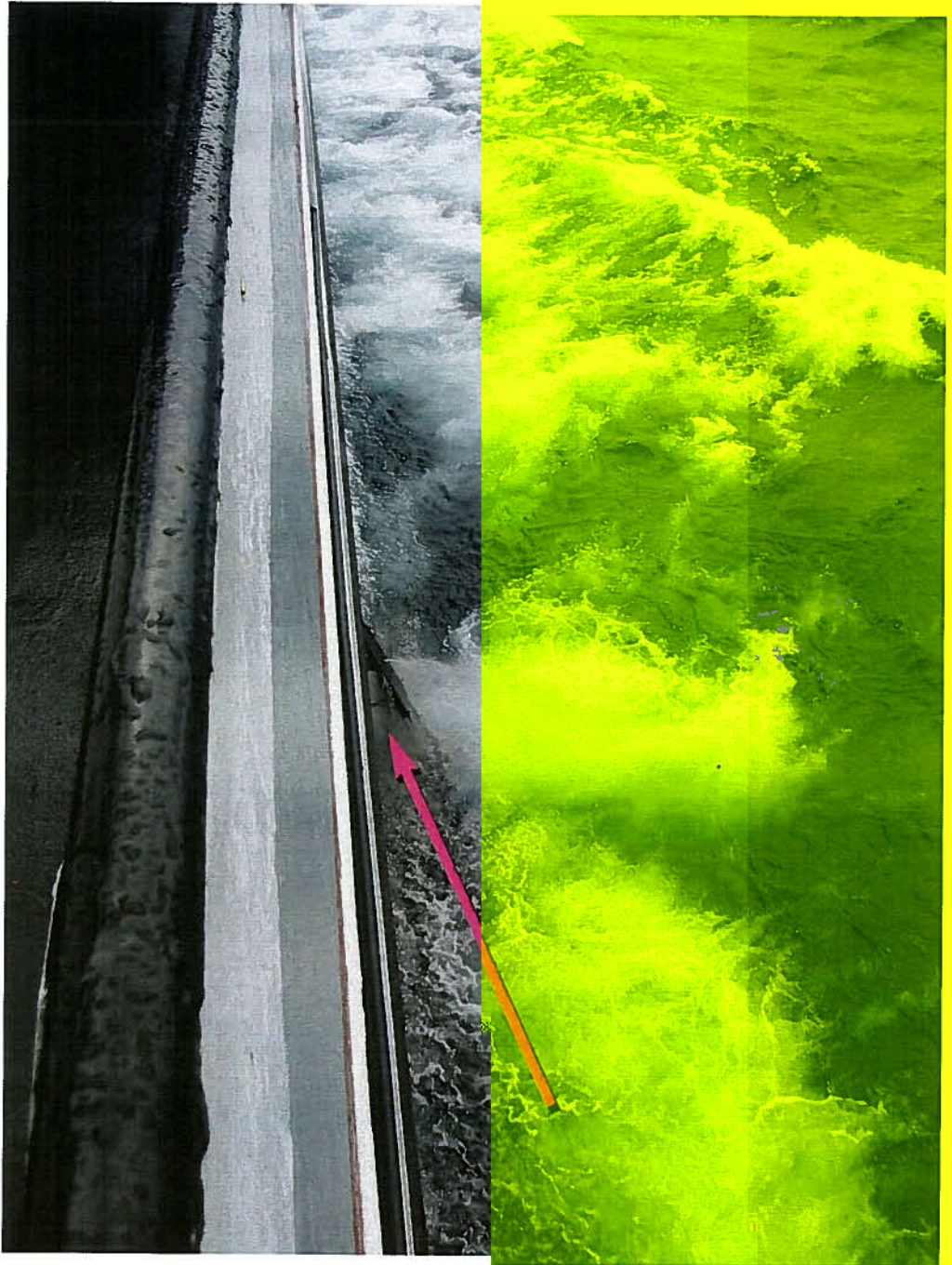
12

REDLER CONVEYOR CASINGS



13

DUST COLLECTOR VALVE FOR ASH CONVEYOR PIPING



14

ASH DISCHARGE POINT



15

Manitowoc Public Utilities coal pile



16



17

Coal being delivered into the ship



LMCF00044

