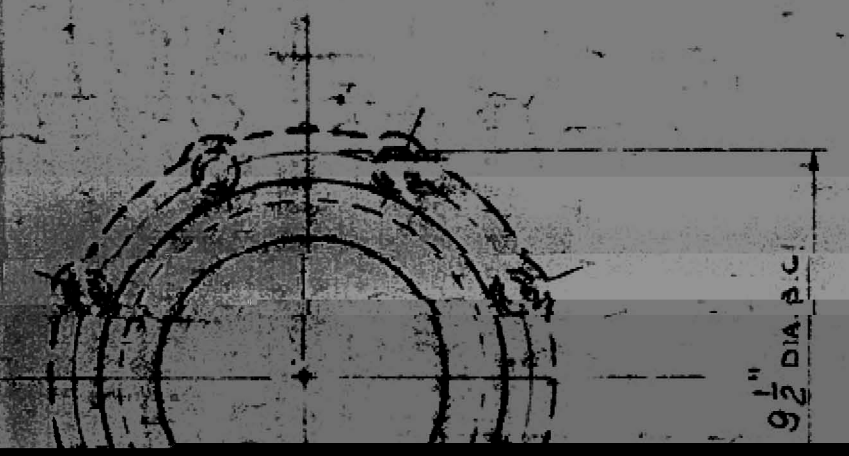
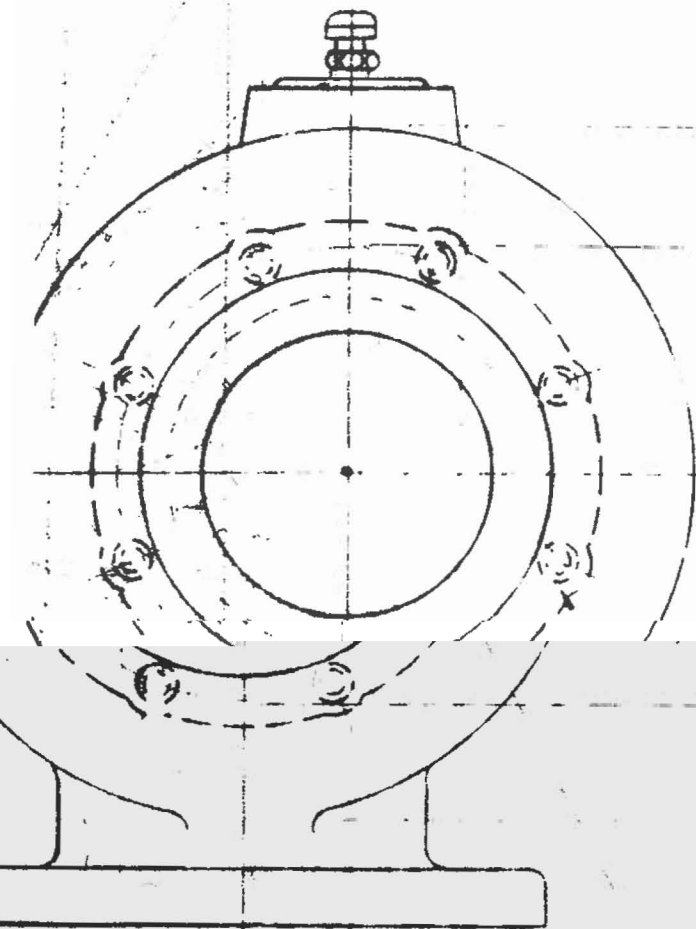


11	1		4 PLY GA
12	8	40882	8" WASHER
13	1		1/4" STANDAF
14	2		1/4" STANDAF
15	1		1/4" STANDAF
16	1		1/2" x 1/4" N.I.
1.1	145 REQ	683-2 x 1	COMBINING
1.2		683-2 x 2	COMBINING
1.3		683-2 x 3	COMBINING

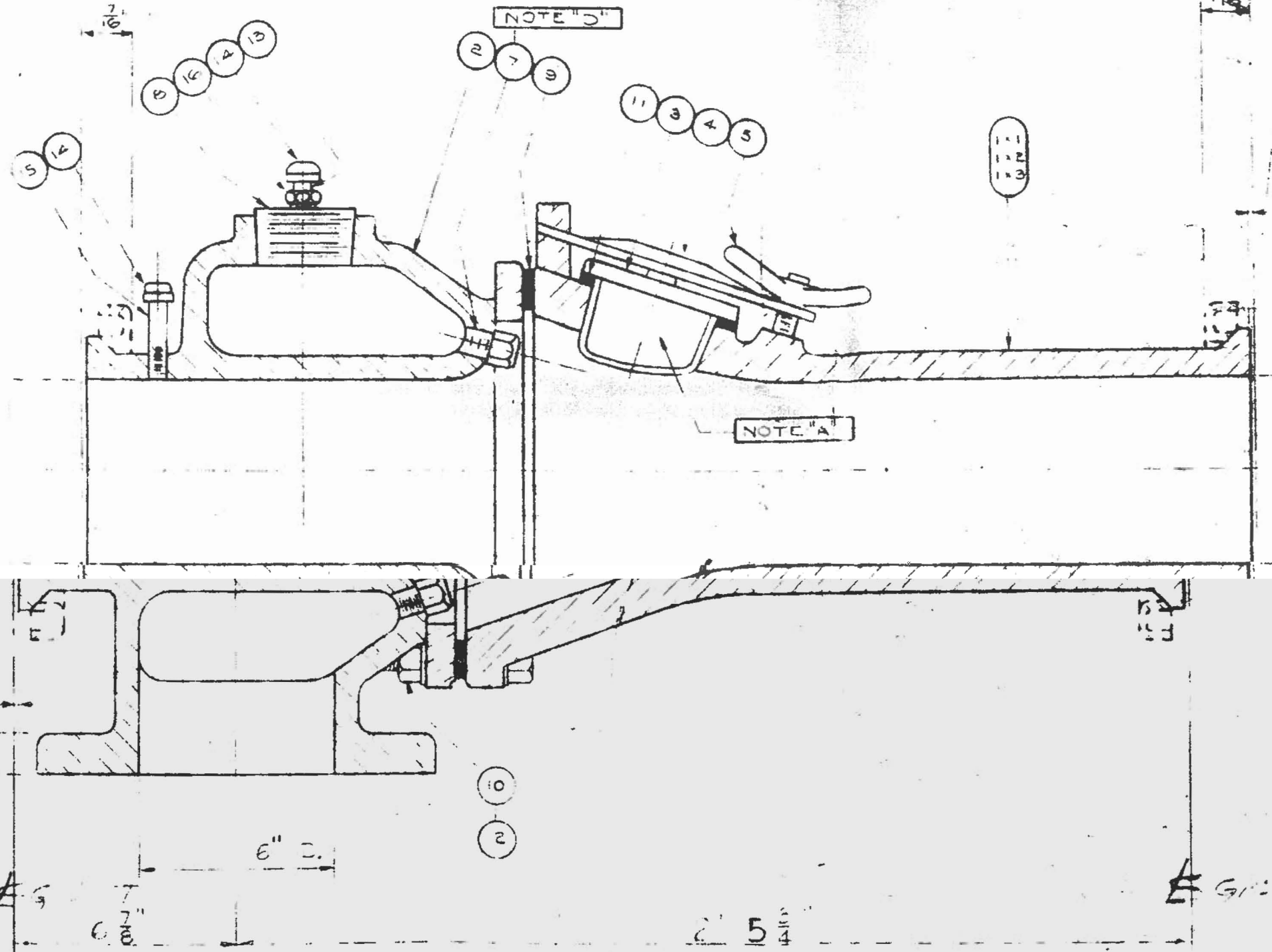




1 1/2" DIA B.C.

1 1/2" DIA

NOTE "B"



NOTE "D"

NOTE "A"

111
112
113

ASSEMBLY #1.1 (W
ASSEMBLY #1.2 (W
ASSEMBLY #1.3 (W